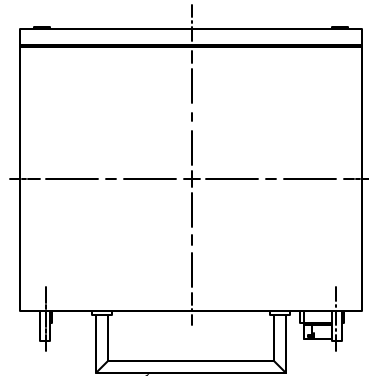


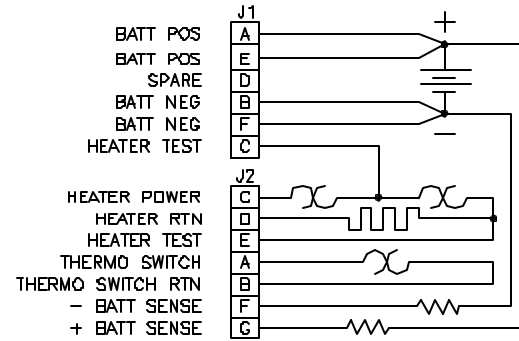
NOTES: UNLESS OTHERWISE SPECIFIED

1. INSPECT PER FAR 21.303(h) QUALITY SYSTEM.
2. SEE DRAWING NO. CB-00217 AND PROCEDURE P-1000 FOR ASSEMBLY AND TEST INSTRUCTION. PROCEDURES AND ASSEMBLY DRAWINGS ARE FOR INTERNAL USE ONLY.
3. DIMENSIONS ARE IN INCHES AND MILLIMETERS SHOWN IN BRACKETS [mm].
4. THIS BATTERY IS NOT RATED FOR "ENGINE STARTING - HIGH RATE PERFORMANCE".

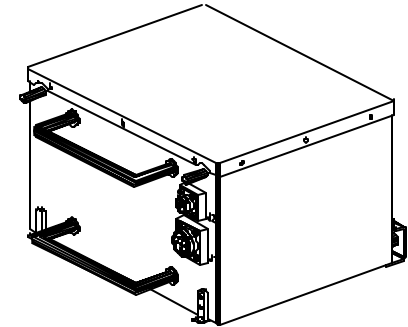
REVISIONS			
REV	DESCRIPTION	DATE	APPROVED



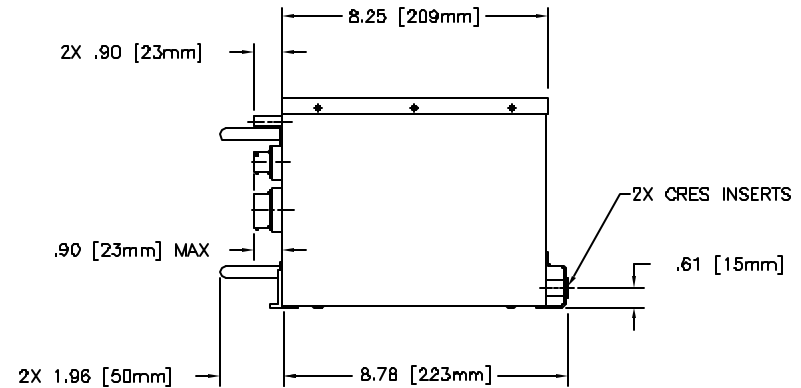
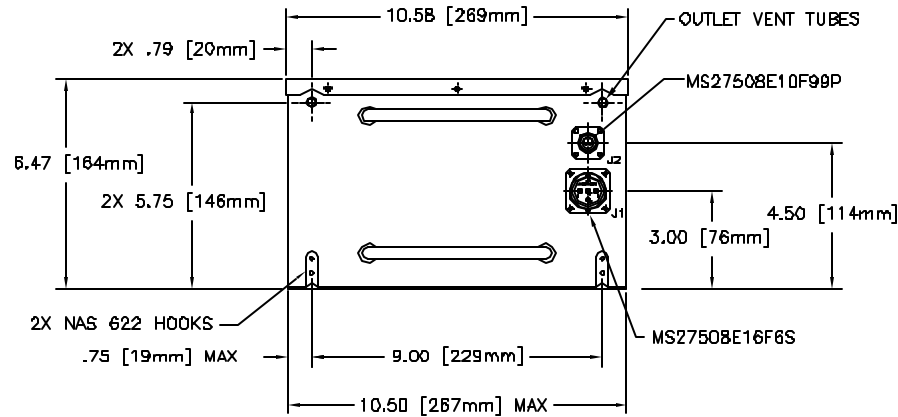
2X INSTALLATION/REMOVAL HANDLES



SCHEMATIC DIAGRAM



REFERENCE VIEW



CAPACITY RATINGS	
MODEL NUMBER	RG-B1B
MAXIMUM WEIGHT	50.0 LBS [22.7 KG]
RATED CAPACITY, C ₁	15 AH
POWER RATING AT 23°C	NOT RATED
POWER RATING AT -18°C	NOT RATED
POWER RATING AT -30°C	NOT RATED

ENVELOPE DRAWING

REV	DATE	BY	CHKD	APP'D	DESCRIPTION

CONTRACT NO.	DATE	TITLE

UNLESS OTHERWISE SPECIFIED DIMENSIONS ARE IN INCHES TOLERANCES ARE:	APPROVALS	DATE
FRACTIONS DECIMALS ANGLES		
XXX .X.XX		
XXXX .X.XXXX	DRAWN HRP	0/23/00
TREATMENT NONE	CHECKED SV	0/24/00
FINISH NONE	APPROVED JET	0/27/00
SIMILAR TO	ISSUED AT	1/07/00

CONCORDE BATTERY CORPORATION	MATERIAL SPECIFICATION	REV NO.
2009 SAN BERNARDINO RD, W. COVINA, CA 91790		
BATTERY, STORAGE, AIRCRAFT		
SIZE C	DWG CODE 63017	DWG NO. RG-B1B
SCALE NONE	SHEET 1 OF 1	