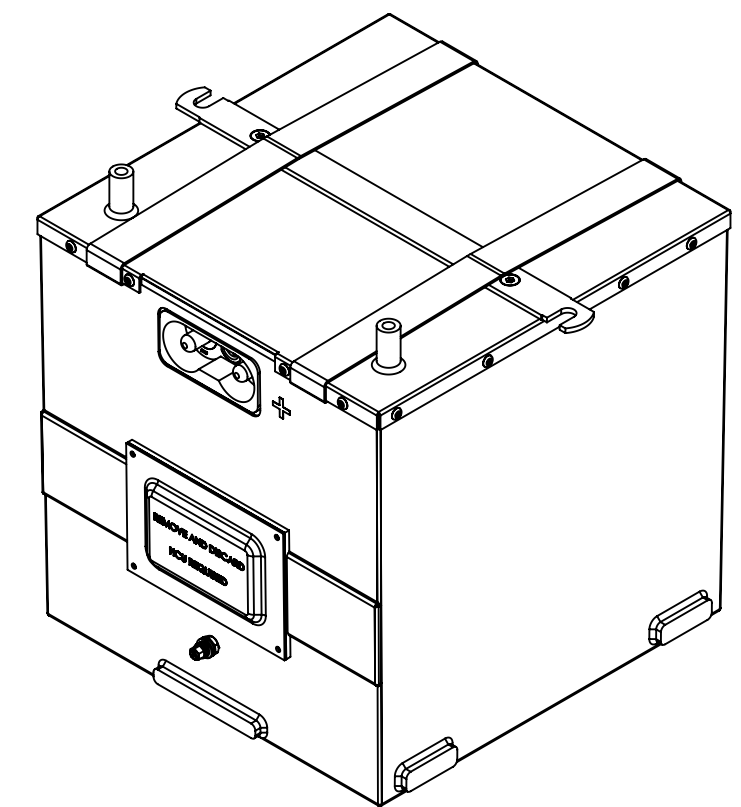
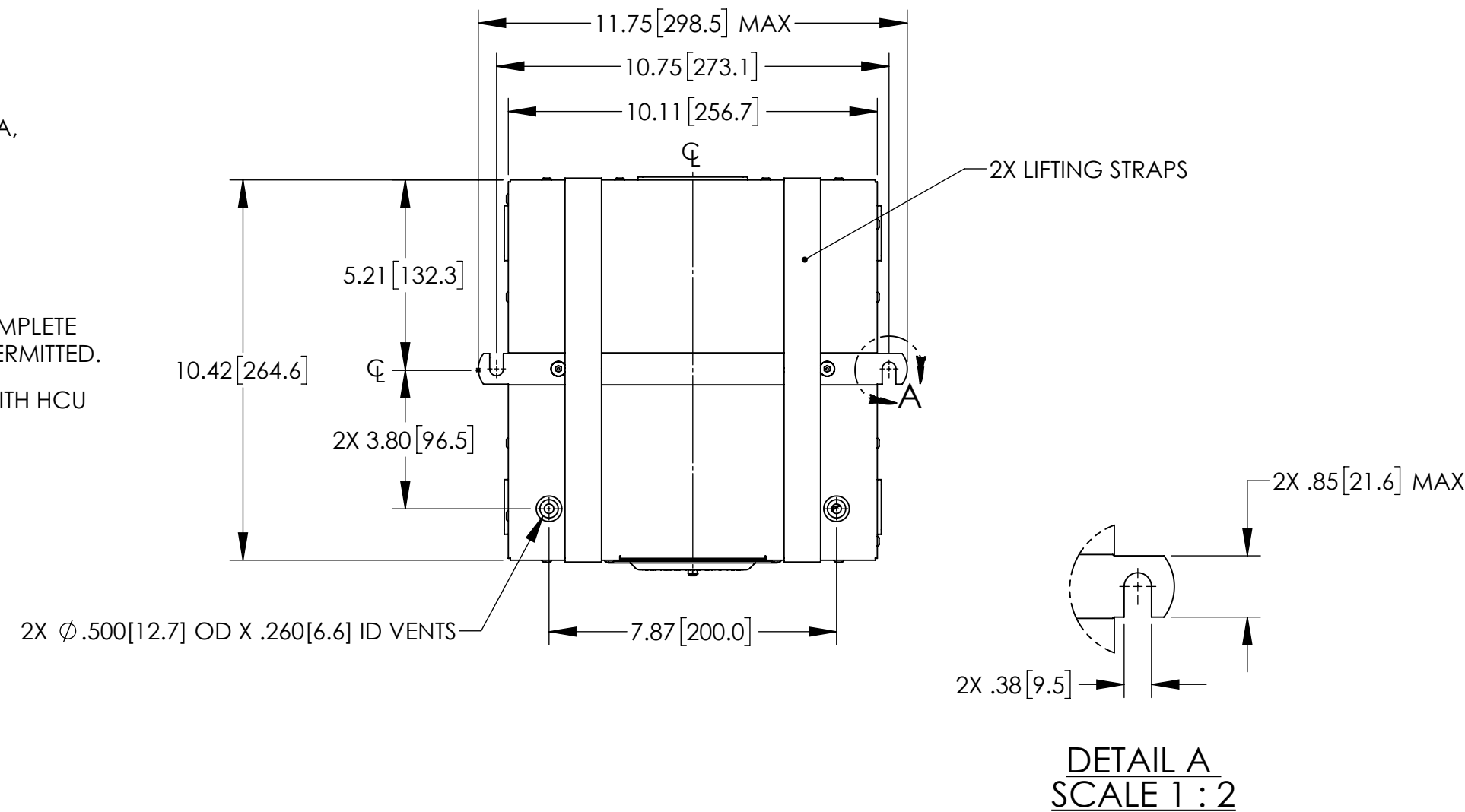


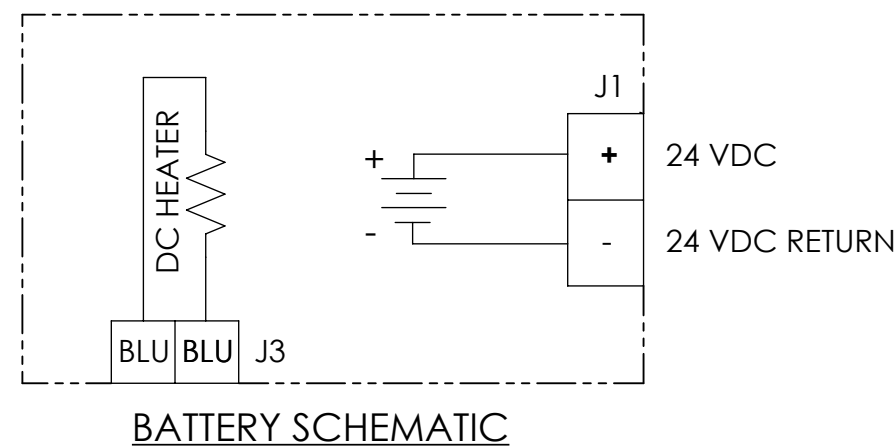
NOTES: UNLESS OTHERWISE SPECIFIED

1. MANUFACTURED AND INSPECTED IAW AS9100 QUALITY SYSTEM REQUIREMENTS.
2. ABBREVIATION USED IN TITLE IS: VALVE REGULATED SEALED LEAD ACID (VRSLA).
3. SEE DRAWING NO. CB-00453 AND PROCEDURE P-1000 FOR ASSEMBLY AND TEST INSTRUCTION. PROCEDURES AND ASSEMBLY DRAWINGS ARE FOR INTERNAL USE ONLY.
4. BATTERIES ARE RATED IAW INTERNATIONAL ELECTRO TECHNICAL COMMISSION STANDARD 60952-1 AND RTCA STANDARD DO-293A, UNLESS OTHERWISE NOTED.
5. DIMENSIONS ARE INCH [MILLIMETER].
6. "GH" SUFFIX DENOTES A "FIRE RESISTANT" EXTERNAL CONTAINER CONSTRUCTED OF 5052 ALUMINUM ALLOY.
7. HCU-6 HEATER CONTROL UNIT IS REQUIRED TO CONSTITUTE A COMPLETE BATTERY ASSEMBLY. ONLY HCU'S SUPPLIED BY CONCORDE ARE PERMITTED.
8. REFER TO ENVELOPE DRAWING RG-380E/53GH-6 FOR BATTERY WITH HCU INSTALLED.
9. 10-32 GROUND STUD. HARDWARE KIT PN 6935 INCLUDED.

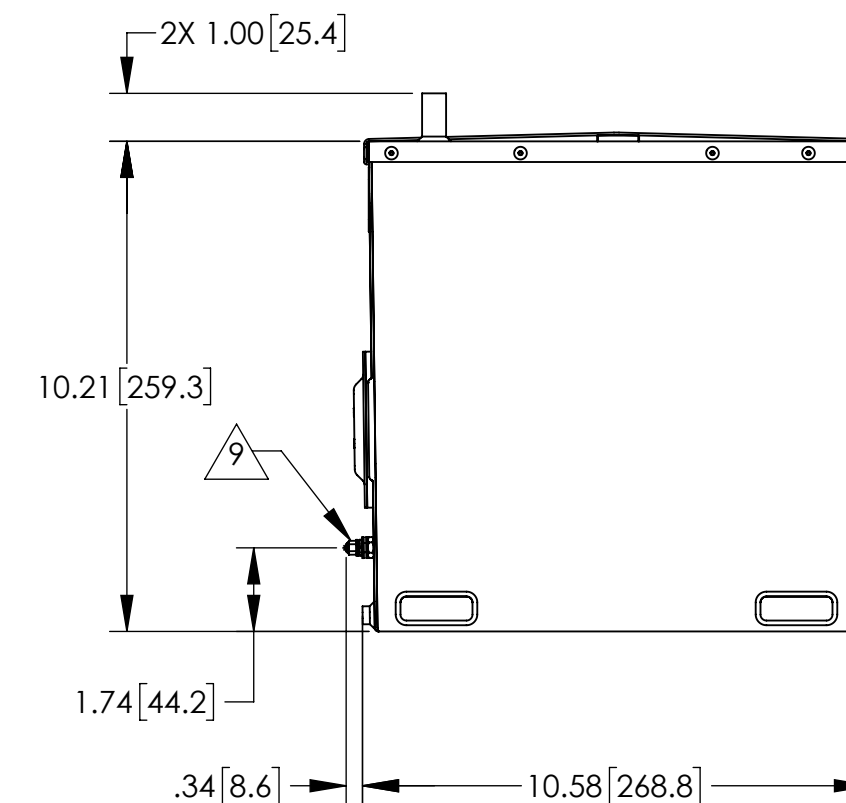
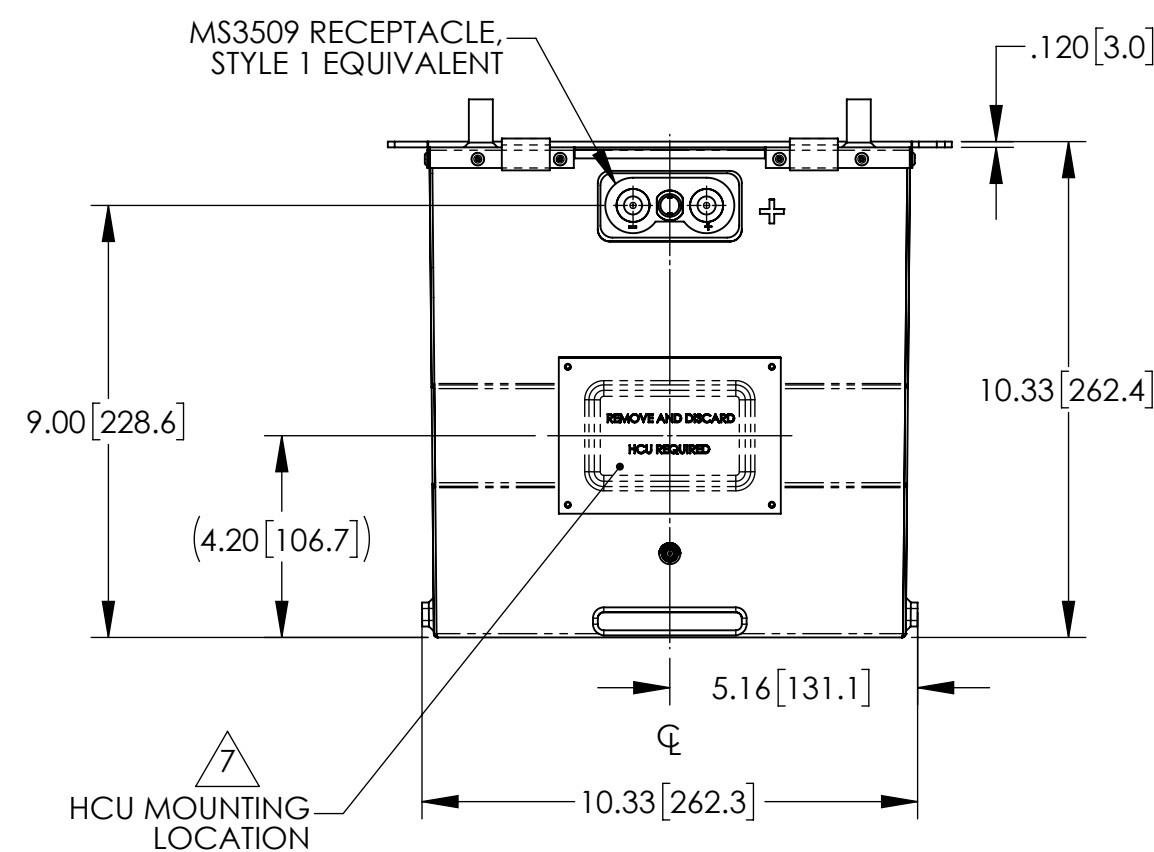
REVISIONS			
REV	DESCRIPTION	DATE	APPROVED
A	MODEL UPDATED, 13.27A @ 28.25 VDC WAS 10.62A @ 28.25 VDC	5/27/21	PH



ISOMETRIC VIEW



BATTERY SCHEMATIC



PART NUMBER	RG-380E/53GH
MAXIMUM WEIGHT	97.4 LBS [44.2 KG]
RATED CAPACITY, C ₁	53 AH
POWER RATING AT 23°C	I _{pp} 1650 A, I _{pr} 1200 A
POWER RATING AT -18°C	I _{pp} 1325 A, I _{pr} 1000 A
POWER RATING AT -30°C	I _{pp} 1125 A, I _{pr} 800 A
INTERNAL DC HEATER	13.27A @ 28.25 VDC

ENVELOPE DRAWING

UNLESS OTHERWISE SPECIFIED DIMENSIONS ARE IN INCHES TOLERANCES ARE:		CONTRACT NO.		CONCORDE BATTERY CORPORATION 2009 SAN BERNARDINO RD, W. COVINA, CA 91790	
FRACTIONS	DECIMALS	ANGLES	APPROVALS	DATE	TITLE
±1/32	.XX ± .06 .XXX ± .030	±1°	DRAWN	6/9/16	BATTERY, VRSLA, 24 VOLT, RG-380E/53GH
TREATMENT	NONE	CHECKED	NS	6/10/16	SIZE
FINISH	NONE	APPROVED	PH	6/10/16	C
SIMILAR TO	CALC WT	ISSUED	DH	5/28/21	CAGE CODE
					63017
					DWG NO.
					RG-380E/53GH
					SCALE
					1:4
					SHEET
					1 OF 1
					REV
					A