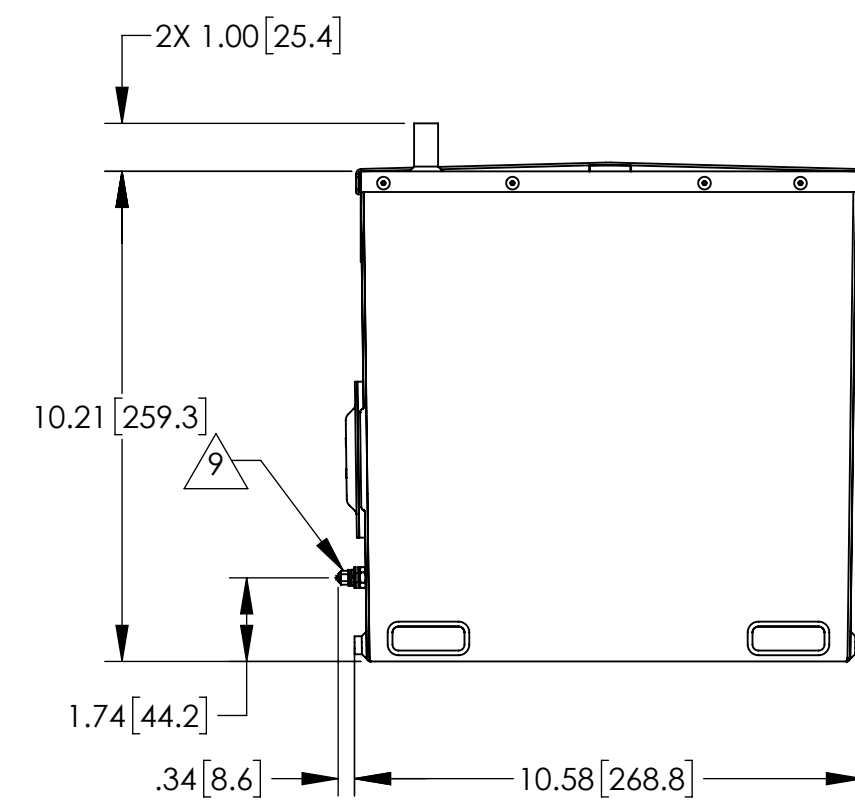
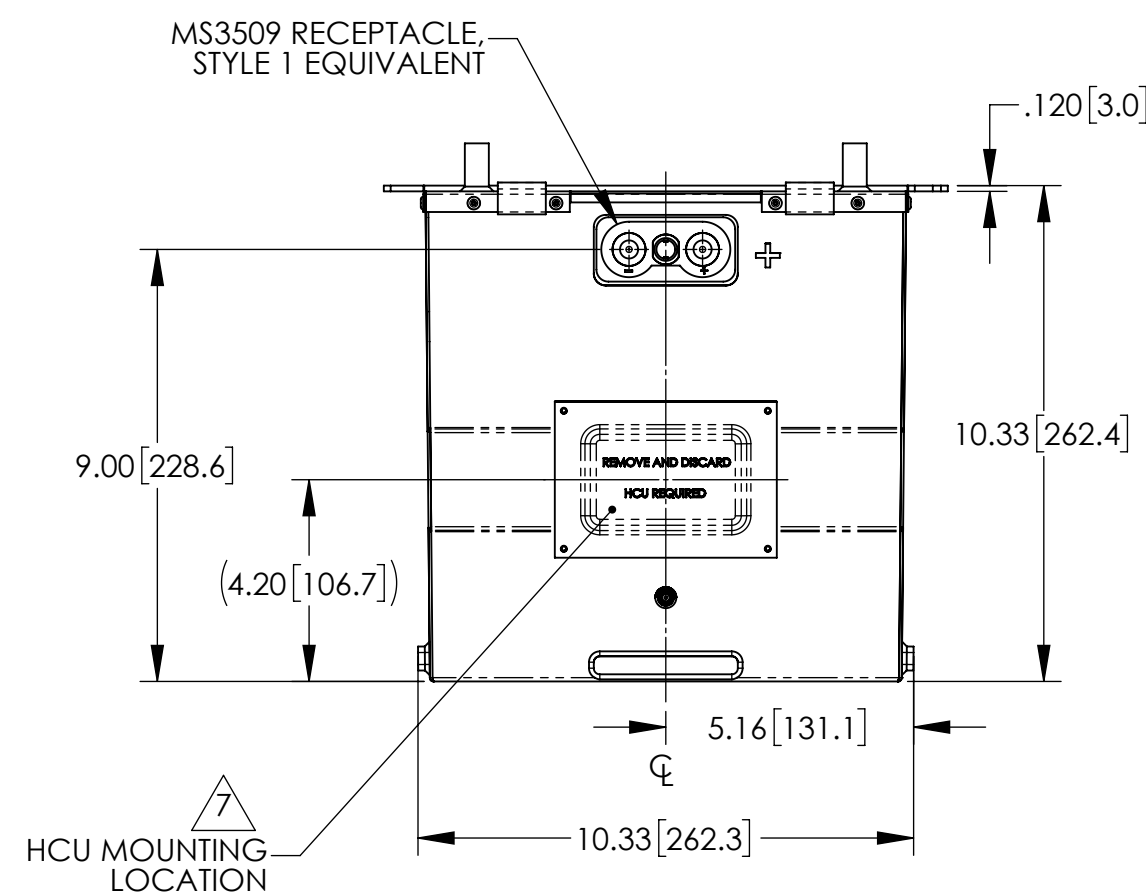
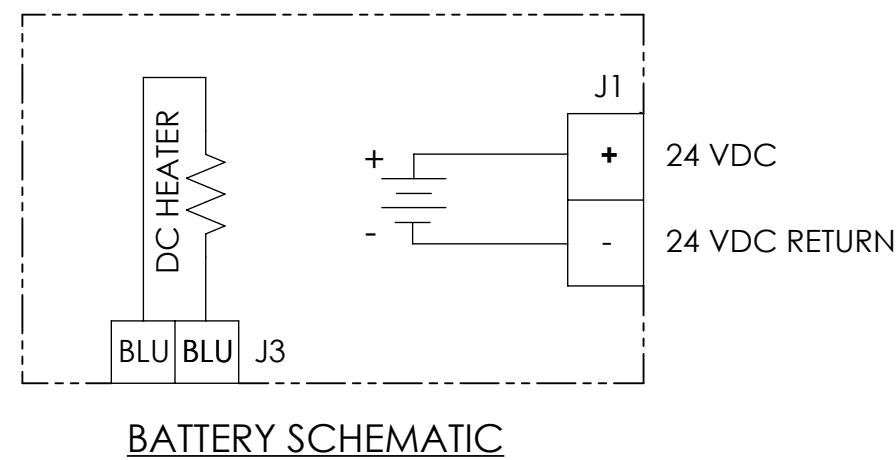
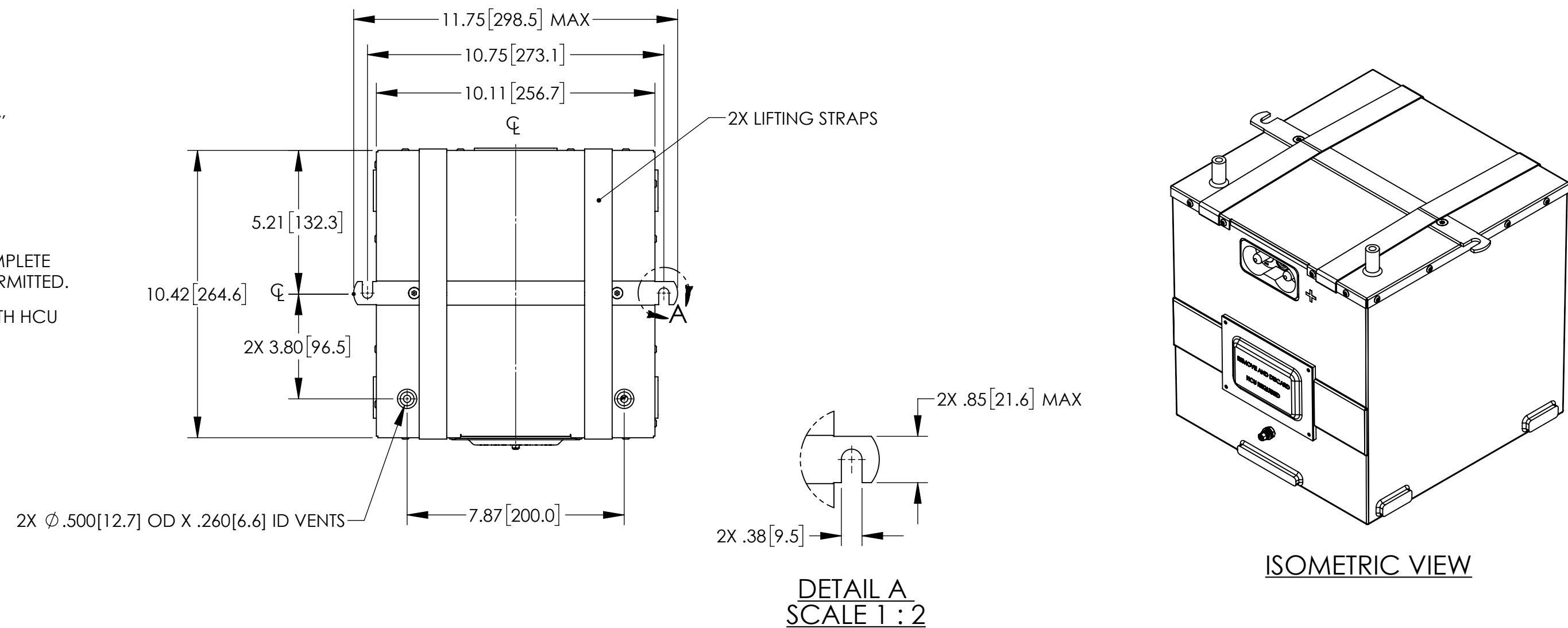


NOTES: UNLESS OTHERWISE SPECIFIED

1. MANUFACTURED AND INSPECTED IAW AS9100 QUALITY SYSTEM REQUIREMENTS.
2. ABBREVIATION USED IN TITLE IS: VALVE REGULATED SEALED LEAD ACID (VRSLA).
3. SEE DRAWING NO. CB-00453 AND PROCEDURE P-1000 FOR ASSEMBLY AND TEST INSTRUCTION. PROCEDURES AND ASSEMBLY DRAWINGS ARE FOR INTERNAL USE ONLY.
4. BATTERIES ARE RATED IAW INTERNATIONAL ELECTROTECHNICAL COMMISSION STANDARD 60952-1 AND RTCA STANDARD DO-293A, UNLESS OTHERWISE NOTED.
5. DIMENSIONS ARE INCH [MILLIMETER].
6. "GH" SUFFIX DENOTES A "FIRE RESISTANT" EXTERNAL CONTAINER CONSTRUCTED OF 5052 ALUMINUM ALLOY.
- 7 HCU-6 HEATER CONTROL UNIT IS REQUIRED TO CONSTITUTE A COMPLETE BATTERY ASSEMBLY. ONLY HCU'S SUPPLIED BY CONCORDE ARE PERMITTED.
8. REFER TO ENVELOPE DRAWING RG-380E/40GH-6 FOR BATTERY WITH HCU INSTALLED.
- 9 10-32 GROUND STUD. HARDWARE KIT PN 6935 INCLUDED.

REVISIONS			
REV	DESCRIPTION	DATE	APPROVED
A	UPDATED MODEL, 13.27A @ 28.25 VDC WAS 10.62A @ 28.25 VDC	5/27/21	PH



PART NUMBER	RG-380E/40GH
MAXIMUM WEIGHT	84.4 LBS [38.3 KG]
RATED CAPACITY, C <sub>1</sub>	38 AH
POWER RATING AT 23°C	lpp 1350 A, lpr 1050 A
POWER RATING AT -18°C	lpp 900 A, lpr 750 A
POWER RATING AT -30°C	lpp 650 A, lpr 550 A
INTERNAL DC HEATER	13.27A @ 28.25 VDC

ENVELOPE DRAWING

UNLESS OTHERWISE SPECIFIED DIMENSIONS ARE IN INCHES TOLERANCES ARE:  FRACTIONS DECIMALS ANGLES ±1/32 .XX ±.06 ±1° .XXX ±.030			CONTRACT NO.		CONCORDE BATTERY CORPORATION 2009 SAN BERNARDINO RD, W. COVINA, CA 91790			
			APPROVALS	DATE	TITLE BATTERY, VRSLA, 24 VOLT, RG-380E/40GH			
TREATMENT	NONE	CHECKED	NS	6/10/16	SIZE	CAGE CODE	DWG NO.	REV
FINISH	NONE	APPROVED	PH	6/10/16	C	63017	RG-380E/40GH	A
SIMILAR TO	CALC WT	ISSUED	DH	5/28/21	SCALE	1:4	SHEET	1 OF 1