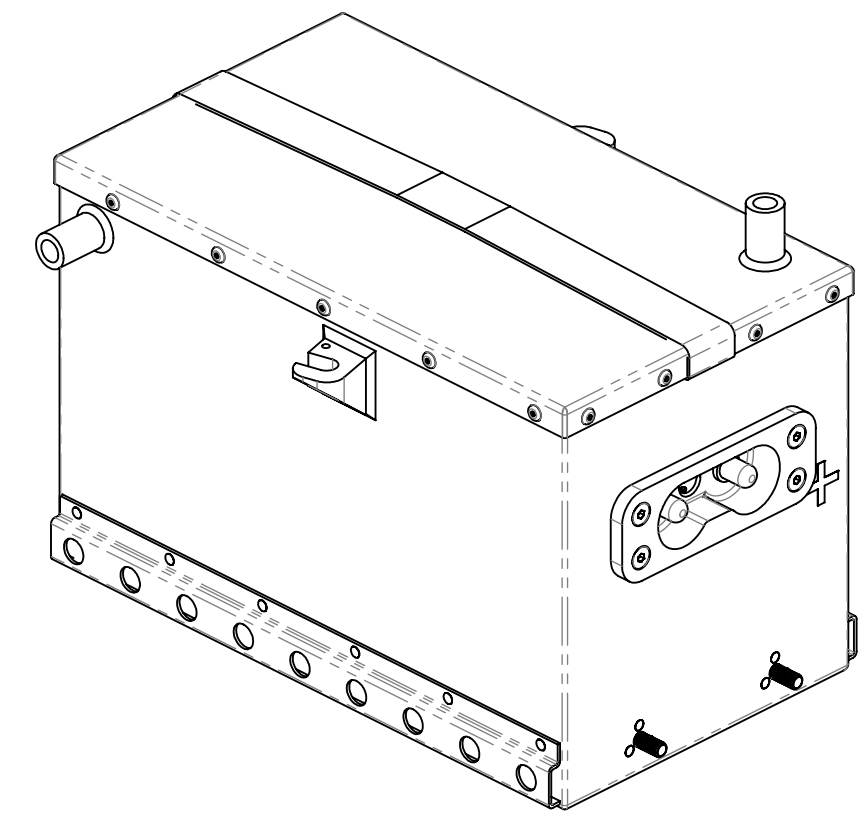
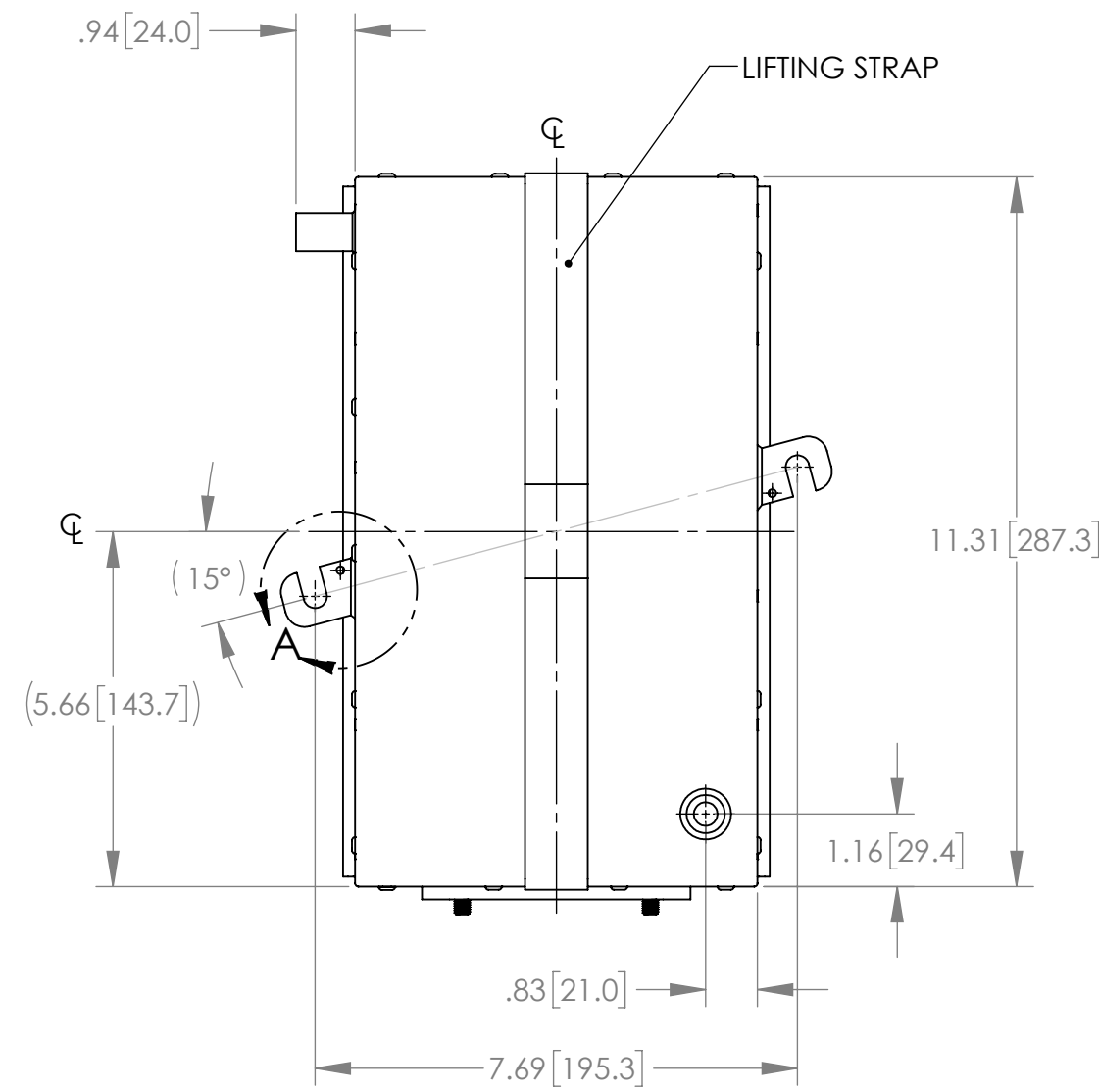
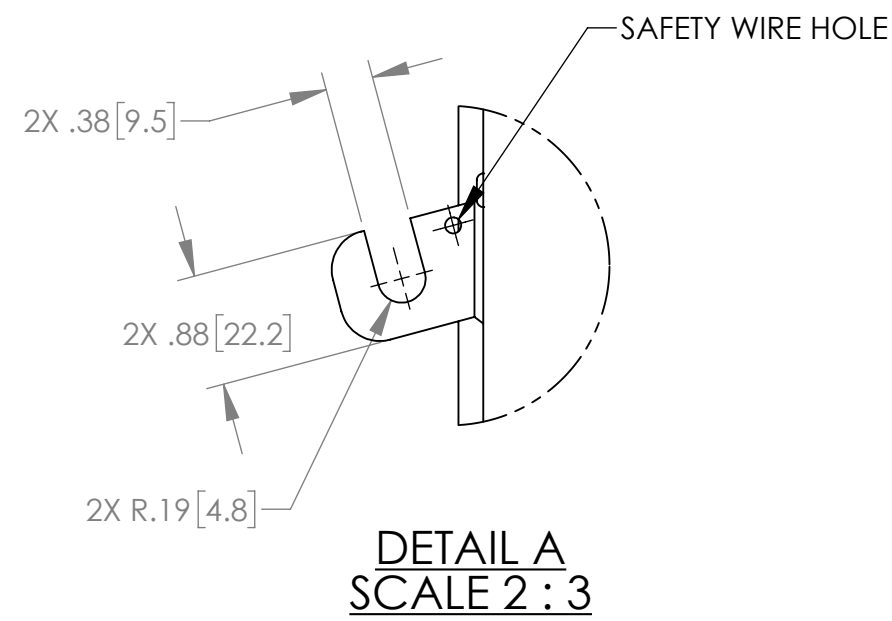


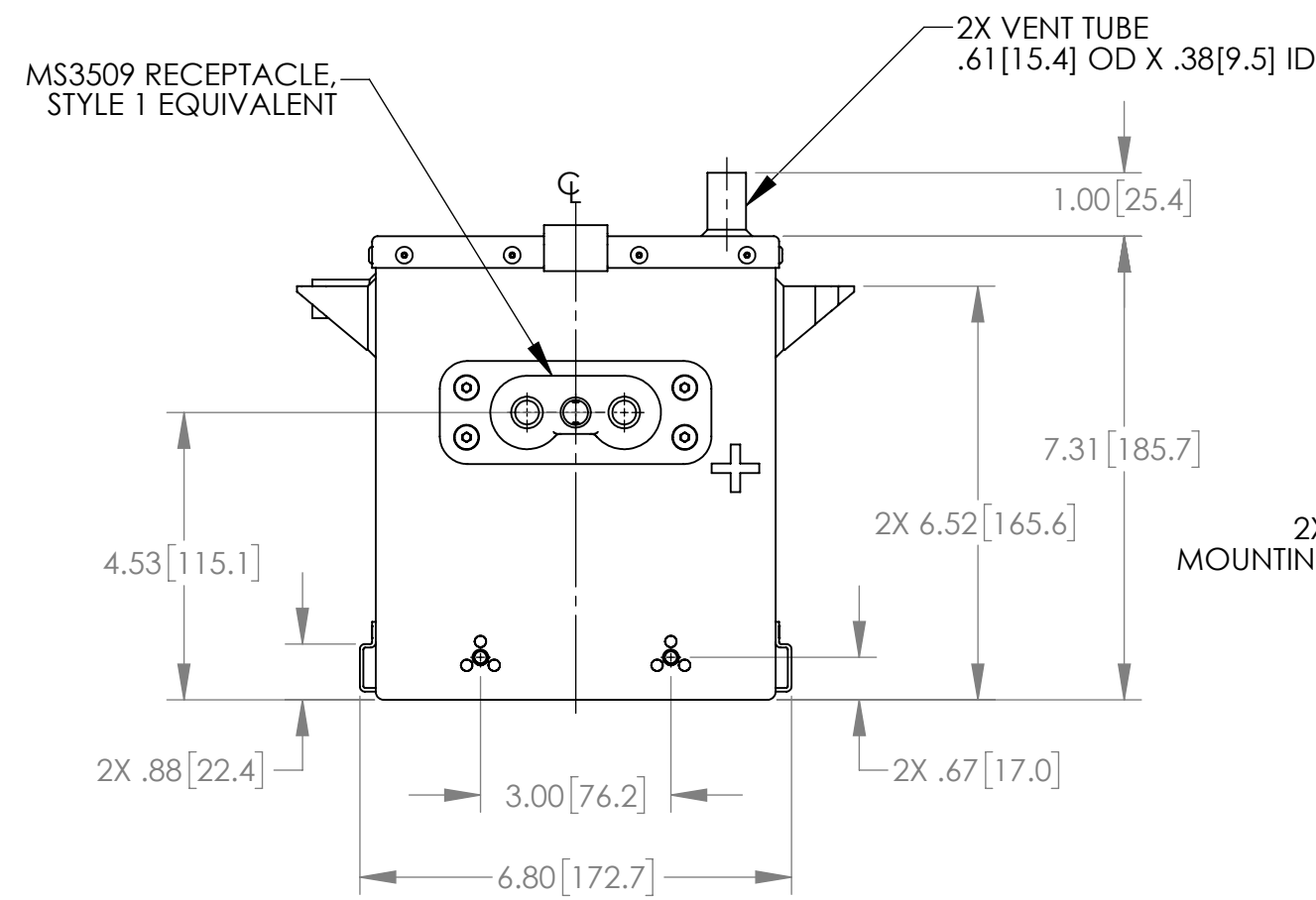
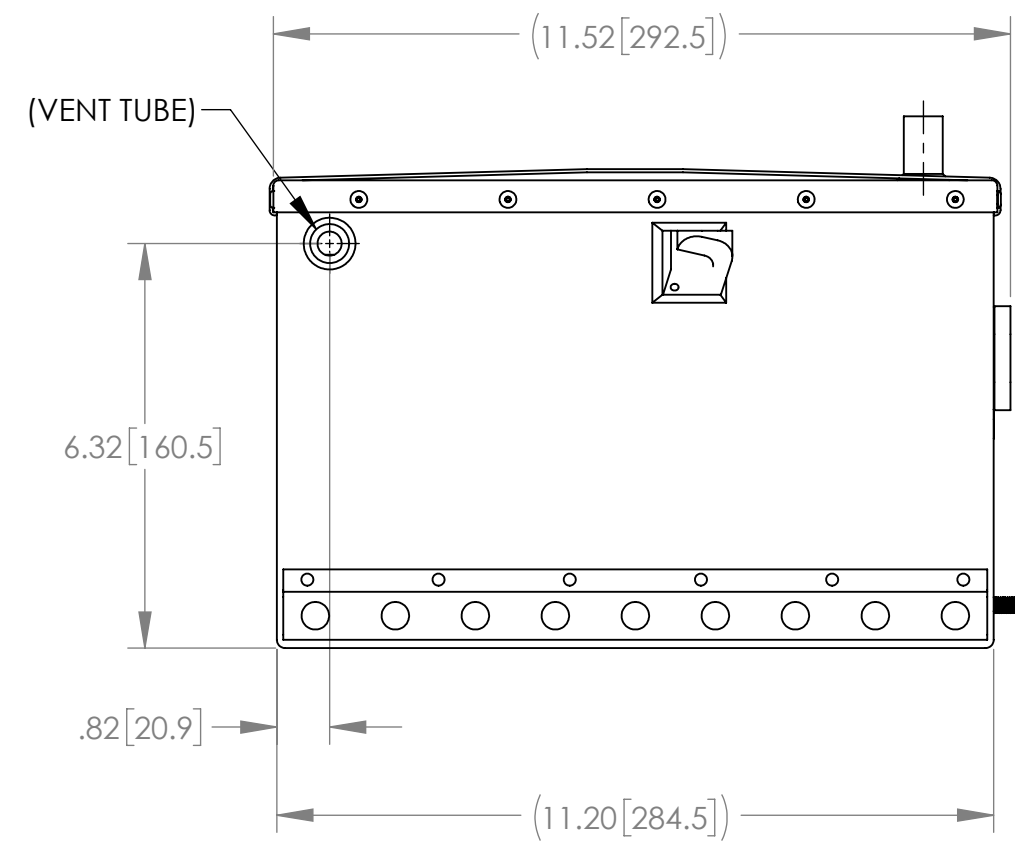
NOTES: UNLESS OTHERWISE SPECIFIED

1. MANUFACTURED AND INSPECTED IAW AS9100 QUALITY SYSTEM REQUIREMENTS.
2. ABBREVIATION USED IN TITLE IS: VALVE REGULATED SEALED LEAD ACID (VRSLA).
3. SEE DRAWING NO. CB-00398 AND PROCEDURE P-1000 FOR ASSEMBLY AND TEST INSTRUCTION. PROCEDURES AND ASSEMBLY DRAWINGS ARE FOR INTERNAL USE ONLY.
4. BATTERIES ARE RATED IAW INTERNATIONAL ELECTROTECHNICAL COMMISSION STANDARD 60952-1 AND RTCA STANDARD DO-293A, UNLESS OTHERWISE NOTED.
5. DIMENSIONS ARE INCH[MILLIMETERS].

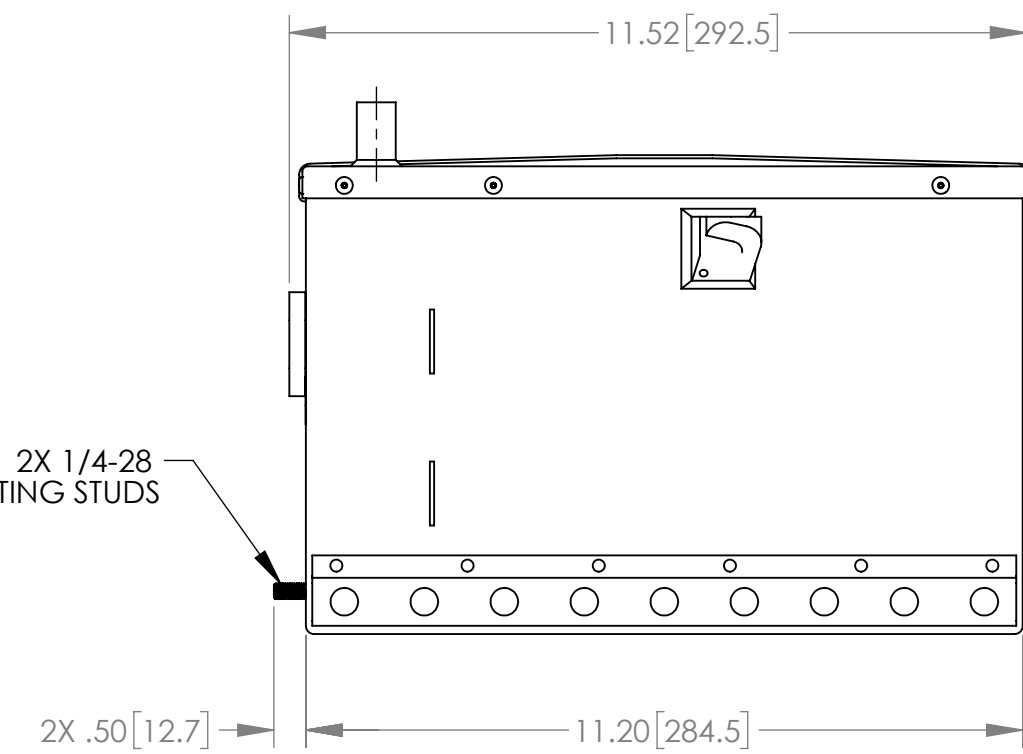
REVISIONS			
REV	DESCRIPTION	DATE	APPROVED
A	REDESIGNED CONTAINER & COVER, REVISED RATINGS	3/03/17	PH



ISOMETRIC VIEW



2X 1/4-28 MOUNTING STUDS



ENVELOPE DRAWING

PART NUMBER	RG-292-102
MAXIMUM WEIGHT	43.5 LBS [19.7 KG]
RATED CAPACITY, C ₁	17 AH
POWER RATING AT 23°C	Ipp 900 A, Ipr 625 A
POWER RATING AT -18°C	Ipp 600 A, Ipr 425 A
POWER RATING AT -30°C	Ipp 450 A, Ipr 300 A

UNLESS OTHERWISE SPECIFIED DIMENSIONS ARE IN INCHES TOLERANCES ARE:			CONTRACT NO.		CONCORDE BATTERY CORPORATION 2009 SAN BERNARDINO RD, W. COVINA, CA 91790			
FRACTIONS	DECIMALS	ANGLES	APPROVALS	DATE	TITLE			
±1/32	.XX ± .06 .XXX ± .030	±1°	DRAWN	D. AYALA	6/11/10	BATTERY, VRSLA, 24 VOLT		
TREATMENT	NONE		CHECKED	AMIII	6/24/10	SIZE	CAGE CODE	DWG NO.
FINISH	NONE		APPROVED	JBT	6/28/10	C	63017	RG-292-102
SIMILAR TO	CALC WT		ISSUED	JG	3/6/17	SCALE	1:3	REV A
						SHEET	1	OF 1