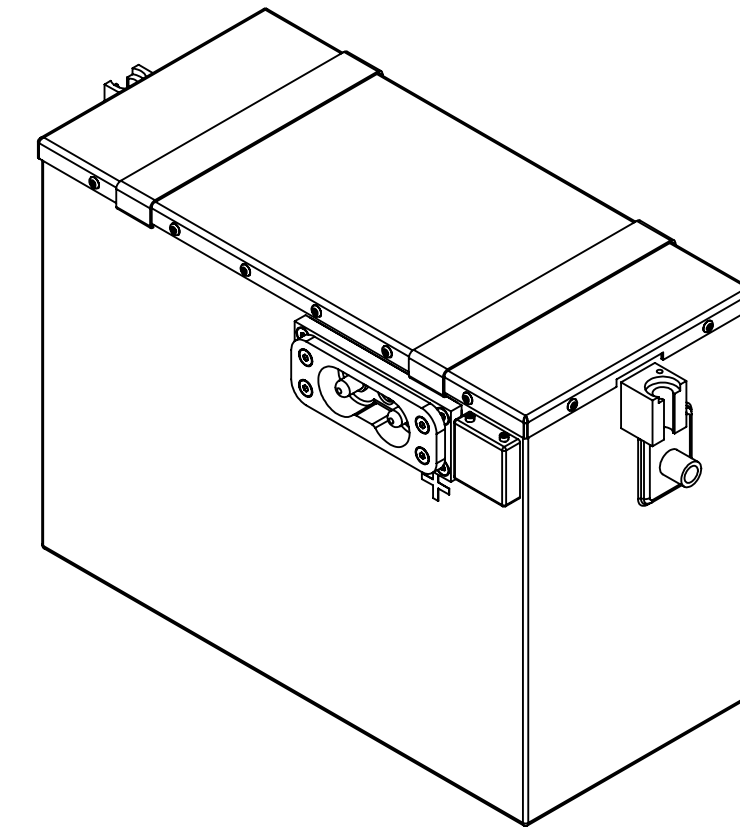
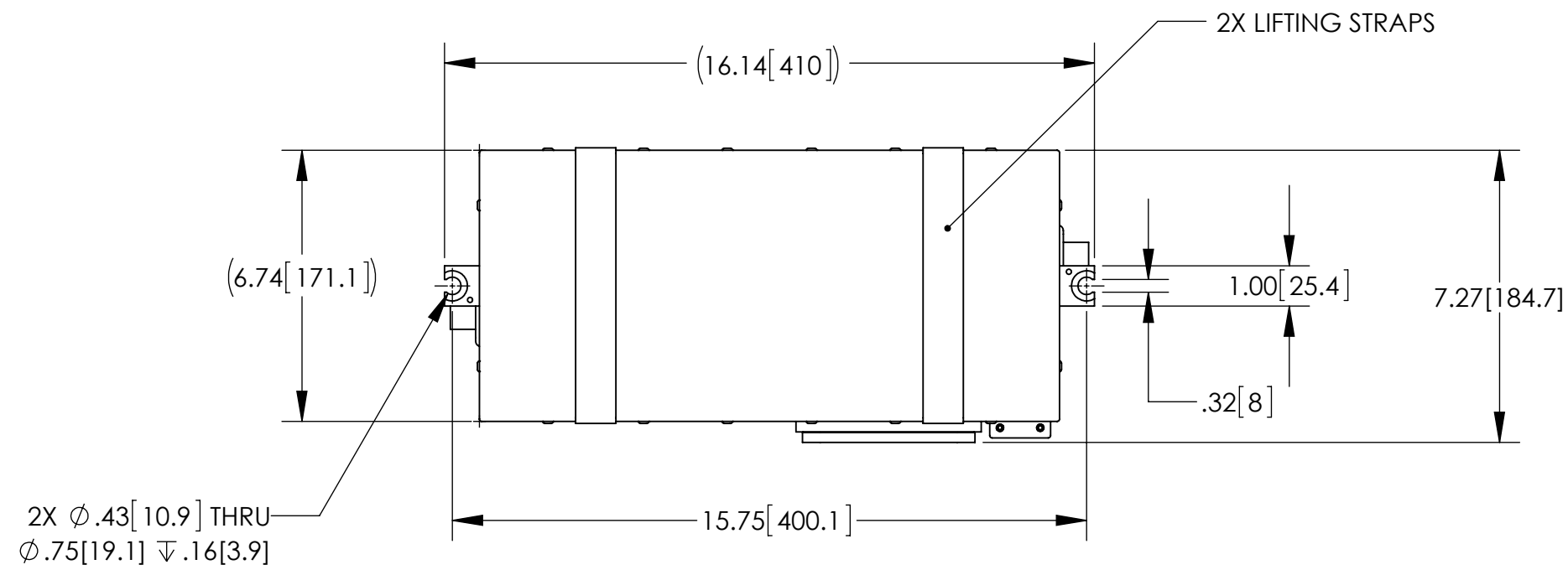


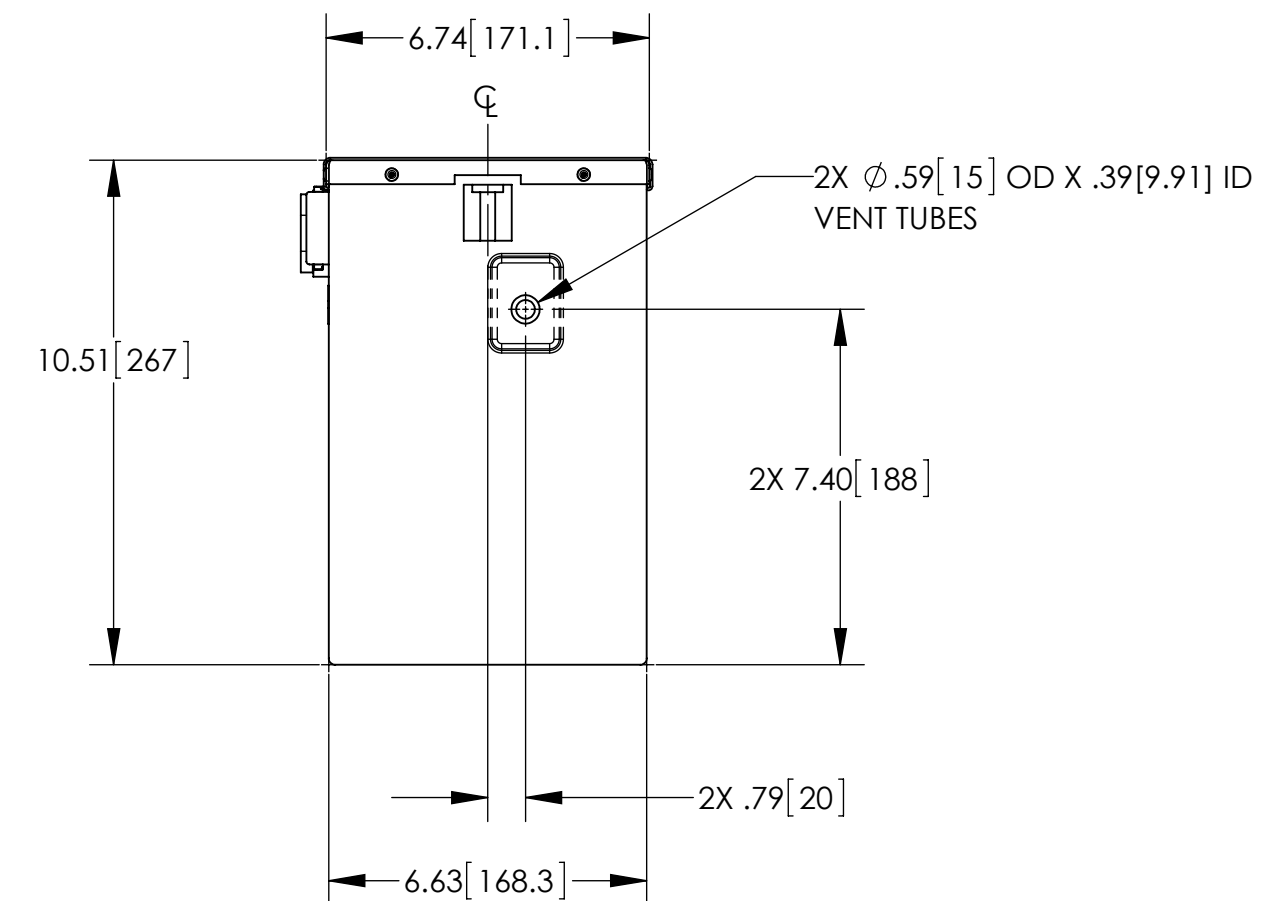
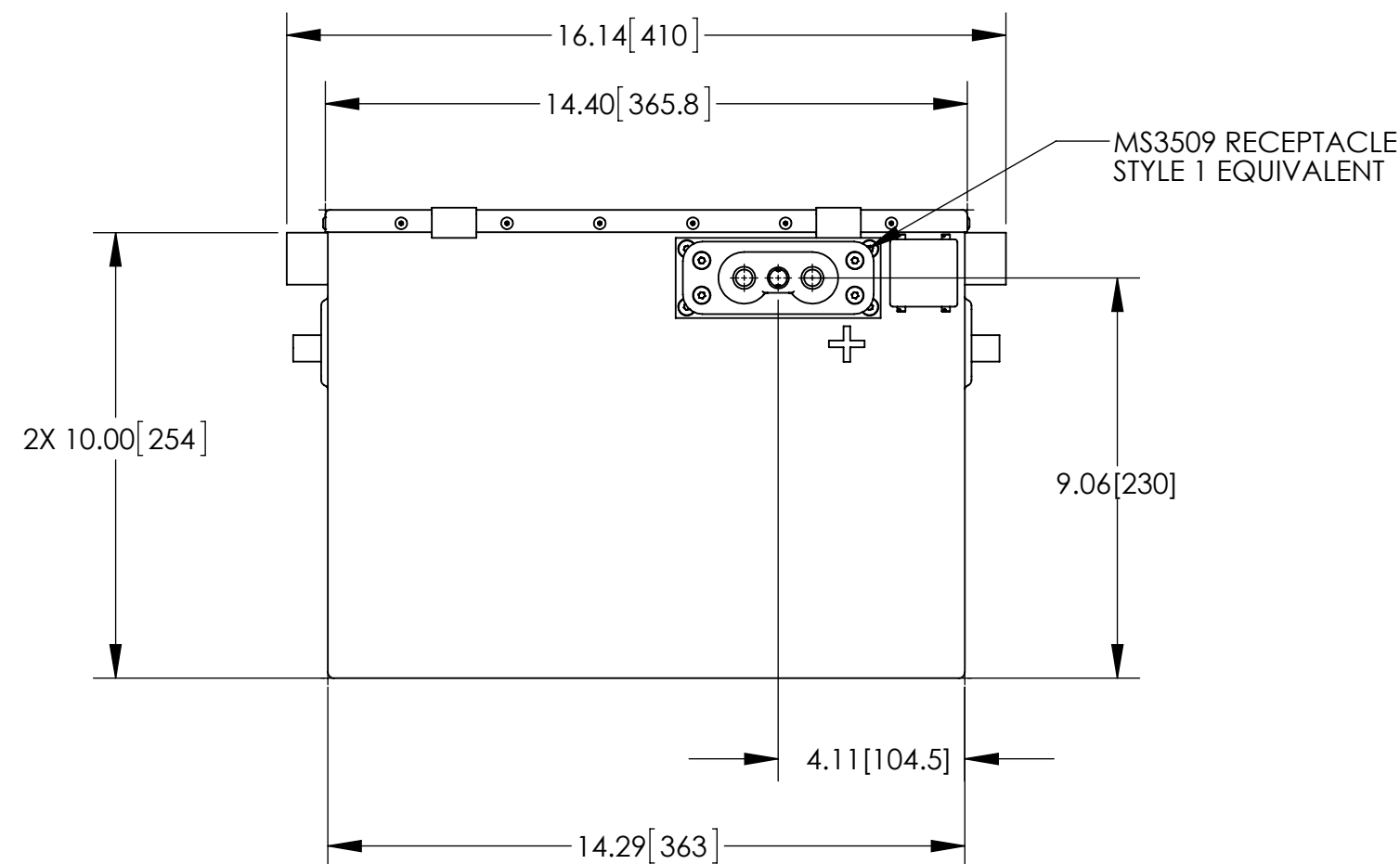
NOTES: UNLESS OTHERWISE SPECIFIED

1. MANUFACTURED AND INSPECTED IAW AS9100 QUALITY SYSTEM REQUIREMENTS.
2. ABBREVIATION USED IN TITLE IS: VALVE REGULATED SEALED LEAD ACID (VRSLA).
3. SEE DRAWING NO. CB-00442 AND PROCEDURE P-1000 FOR ASSEMBLY AND TEST INSTRUCTION. PROCEDURES AND ASSEMBLY DRAWINGS ARE FOR INTERNAL USE ONLY.
4. BATTERIES ARE RATED IAW INTERNATIONAL ELECTROTECHNICAL COMMISSION STANDARD 60952-1 AND RTCA STANDARD DO-293A, UNLESS OTHERWISE NOTED.
5. DIMENSIONS ARE INCH [MILLIMETERS].

REVISIONS			
REV	DESCRIPTION	DATE	APPROVED
A	REVISED Ipp/Ipr RATINGS	9/24/14	JBT



ISOMETRIC VIEW



ENVELOPE DRAWING

PART NUMBER	RG-235
MAXIMUM WEIGHT	86.0 LBS [39.0 KG]
RATED CAPACITY, C ₁	44 AH
POWER RATING AT 23° C	Ipp 1200 A, Ipr 950 A
POWER RATING AT -18° C	Ipp 1025 A, Ipr 800 A
POWER RATING AT -30° C	Ipp 875 A, Ipr 675 A

UNLESS OTHERWISE SPECIFIED DIMENSIONS ARE IN INCHES TOLERANCES ARE:			CONTRACT NO.		CONCORDE BATTERY CORPORATION 2009 SAN BERNARDINO RD, W. COVINA, CA 91790		
FRACTIONS	DECIMALS	ANGLES	APPROVALS	DATE	TITLE		
$\pm 1/32$.XX \pm .03 .XXX \pm .015	$\pm 1^\circ$	DRAWN	M. AULBACH	5/9/13	BATTERY, VRSLA, 24 VOLT	
TREATMENT	NONE	CHECKED	NS	4/4/14	SIZE	CAGE CODE	DWG NO.
FINISH	NONE	APPROVED	JBT	4/4/14	C	63017	RG-235
SIMILAR TO	CALC WT	ISSUED	BJ	9/24/14	SCALE	1:4	REV A
						SHEET	1 OF 1