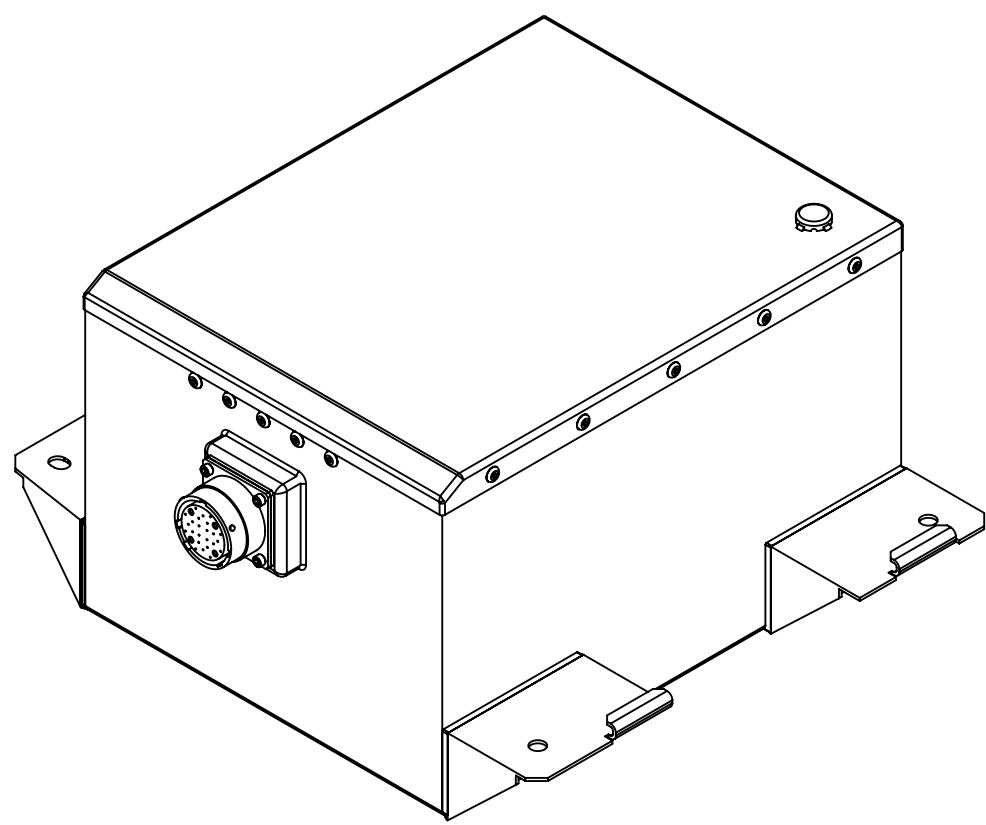
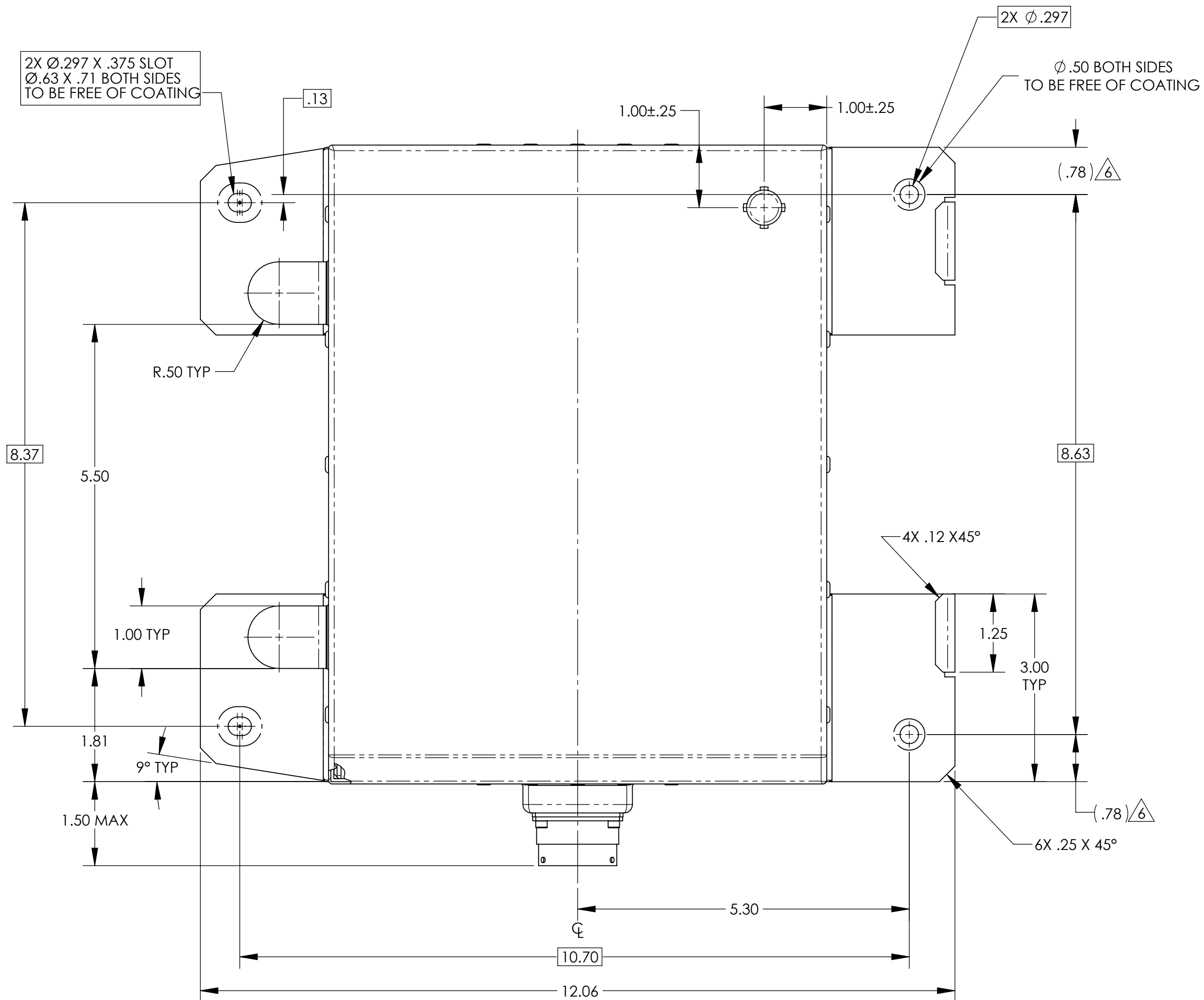


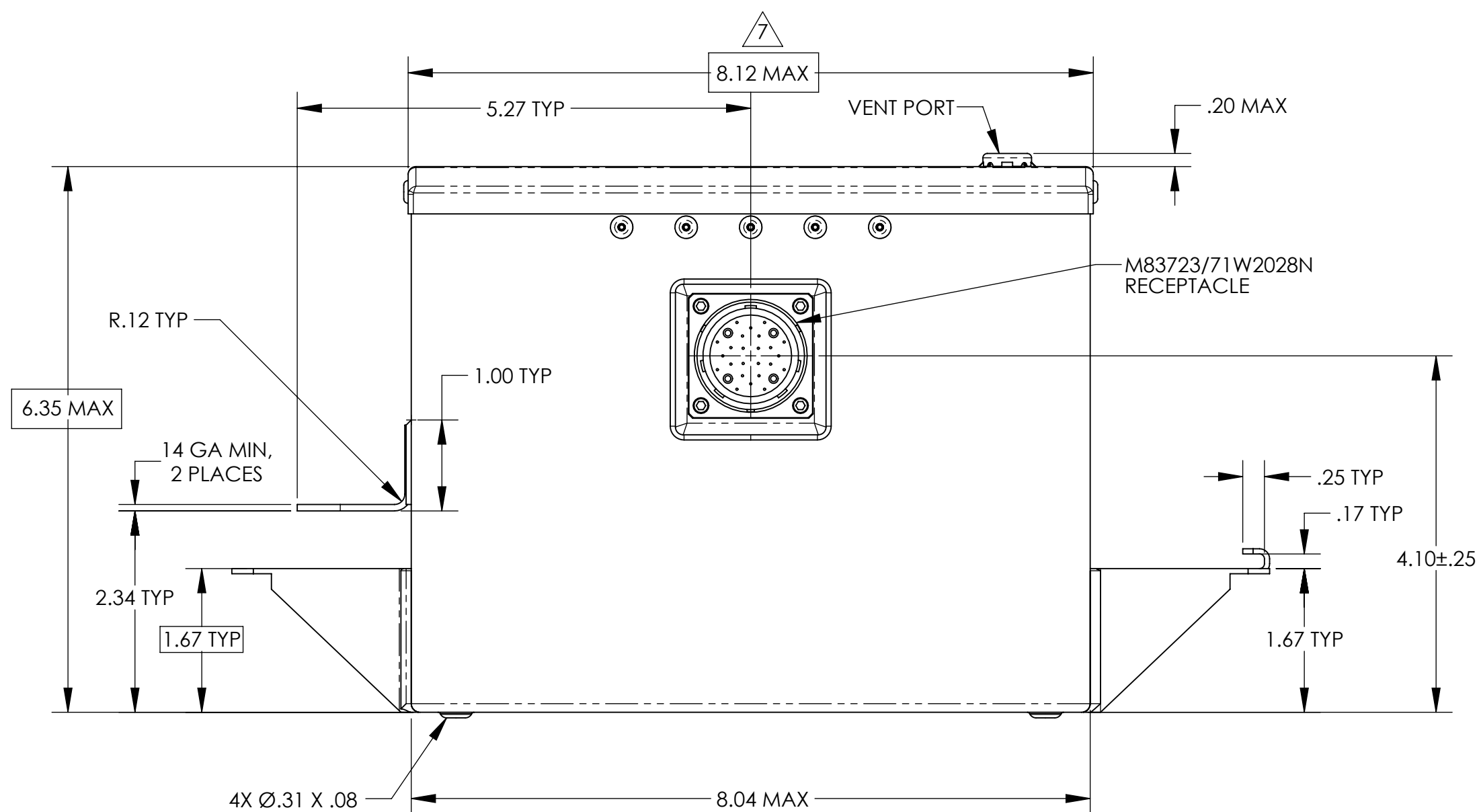
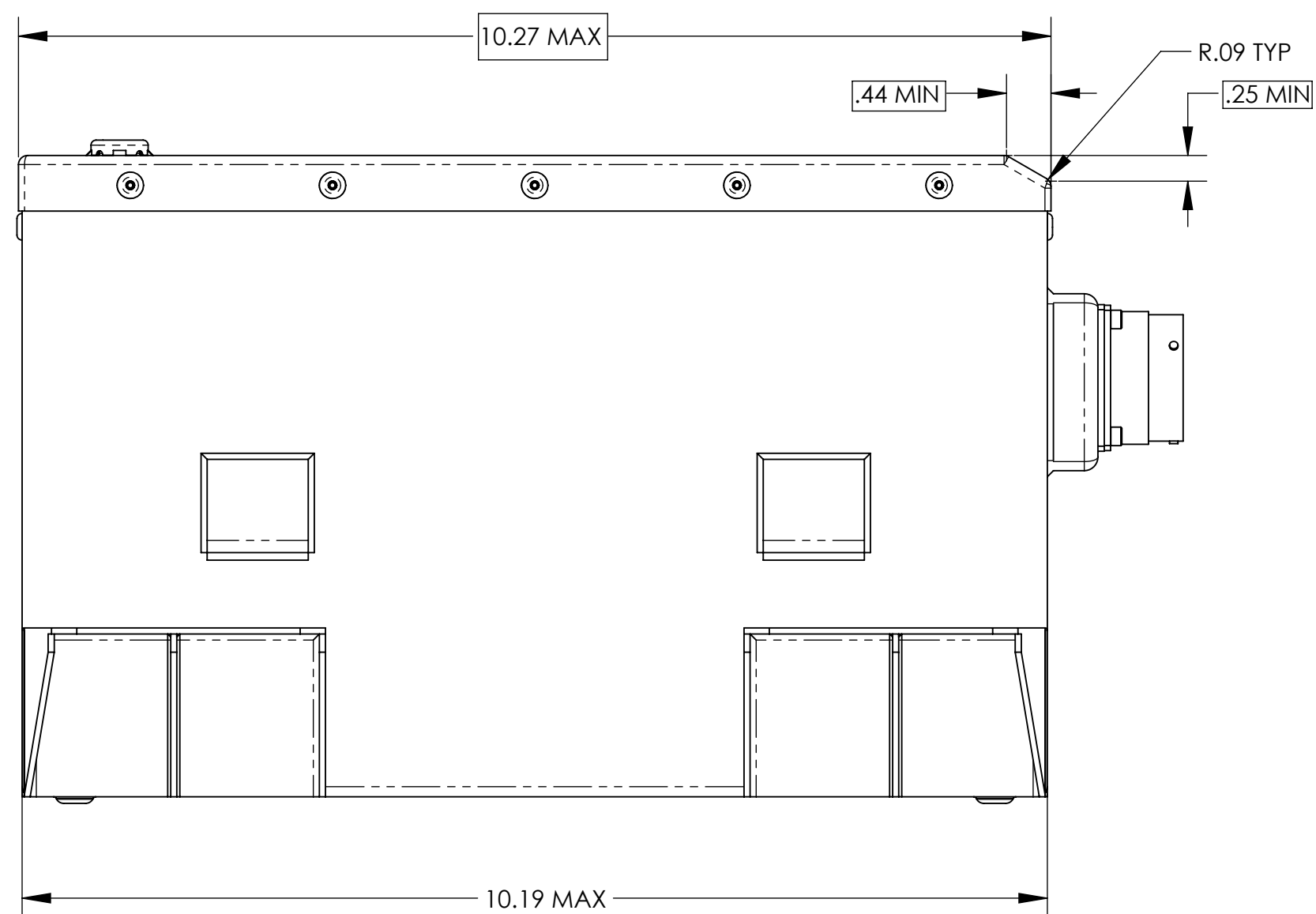
1. MANUFACTURED AND INSPECTED IAW AS9100 QUALITY SYSTEM REQUIREMENTS.
2. SEE DRAWING NO. CB-00482 AND PROCEDURE P-1000 FOR ASSEMBLY AND TEST INSTRUCTION. PROCEDURES AND ASSEMBLY DRAWINGS ARE FOR INTERNAL USE ONLY.
3. BATTERY SHALL MEET REQUIREMENTS OF BATTELLE SPECIFICATION N597349-S001C
4. DIMENSIONS ARE IN INCHES.
5. DIMENSIONS ENCLOSED IN BOXES SHALL BE USED FOR ACCEPTANCE TEST MEASUREMENT RECORDS.

 RIVETS ARE ALLOWED TO EXTEND .080 BEYOND COVER DIMENSIONS.

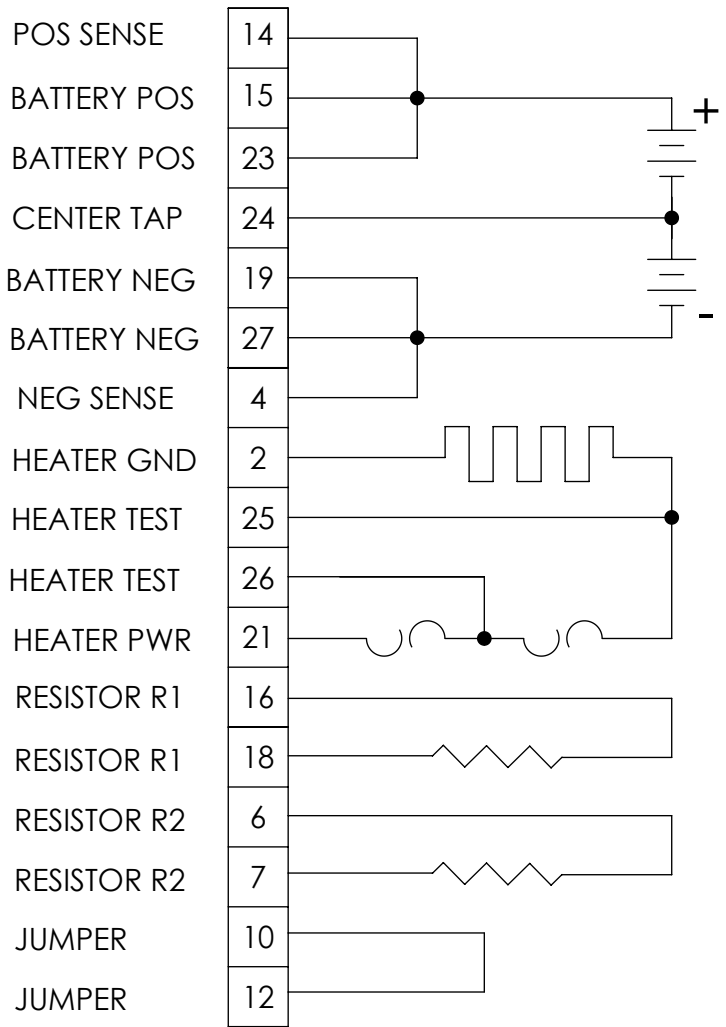
REVISIONS			
REV	DESCRIPTION	DATE	APPROVED
A	UPDATED SCHEMATIC; "BOTH SIDES TO BE FREE OF COATING" WAS SPOTFACE	12/21/07	DV
B	REVISED TO MEET BATTELLE N597349-S001C REQ'TS	9/2/22	DV
C	REVISED NOTES, ADDED RATING TABLE	5/15/25	DV



ISOMETRIC VIEW



RECEPTACLE J1 PIN IDENTIFICATION



SCHEMATIC DIAGRAM

ENVELOPE DRAWING

PART NUMBER	RG-161
MAXIMUM WEIGHT	50 LBS [22.7 KG]
RATED CAPACITY, C ₁	15 AH

UNLESS OTHERWISE SPECIFIED DIMENSIONS ARE IN INCHES TOLERANCES ARE:			CONTRACT NO.		CONCORDE BATTERY CORPORATION 2009 SAN BERNARDINO RD., W. COVINA, CA 91790				
FRACTIONS DECIMALS ANGLES $\pm 1/32$.XXX $\pm .03$ $\pm 1^\circ$.XXX $\pm .010$			APPROVALS DATE		TITLE BATTERY, F-16, PRE-BLOCK 40				
TREATMENT NONE FINISH NONE			DRAWN R.MURRIETA 8/31/06 CHECKED AMILL 8/20/07 APPROVED DVI 8/20/07		SIZE CAGE CODE DWG. NO. REV		D 63017 RG-161 C		
SIMILAR TO CALC W/T			ISSUED DH 8/16/25		SCALE 1:1.5		SHEET 1 OF 1		