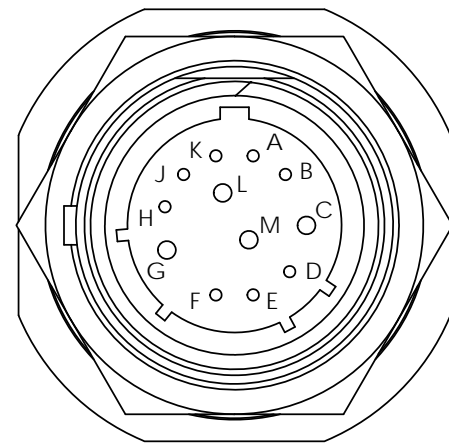
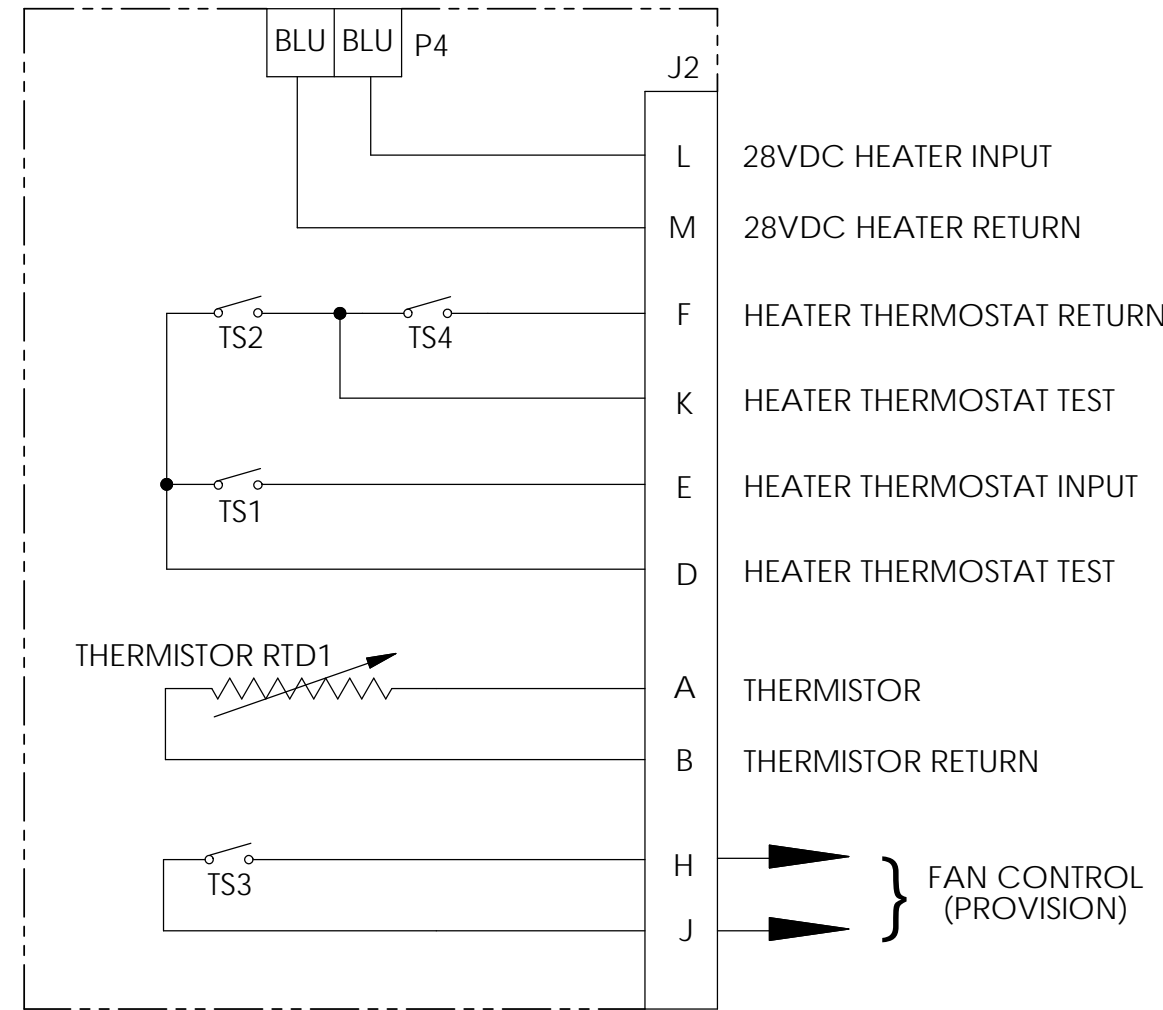


NOTES: UNLESS OTHERWISE SPECIFIED

1. MANUFACTURED AND INSPECTED IAW AS9100 QUALITY SYSTEM REQUIREMENTS.
2. SEE DRAWING NO. 9704 AND PROCEDURE P-1000 FOR ASSEMBLY AND TEST INSTRUCTION. PROCEDURES AND ASSEMBLY DRAWINGS ARE FOR INTERNAL USE ONLY.
3. REFER TO KIT DRAWING 5-0312 FOR CMM, MOUNTING HARDWARE, AND INSTALLATION INSTRUCTIONS.
4. DIMENSIONS ARE INCH [MILLIMETERS].
5. MAXIMUM WEIGHT: 1.0 LB [.45 KG]

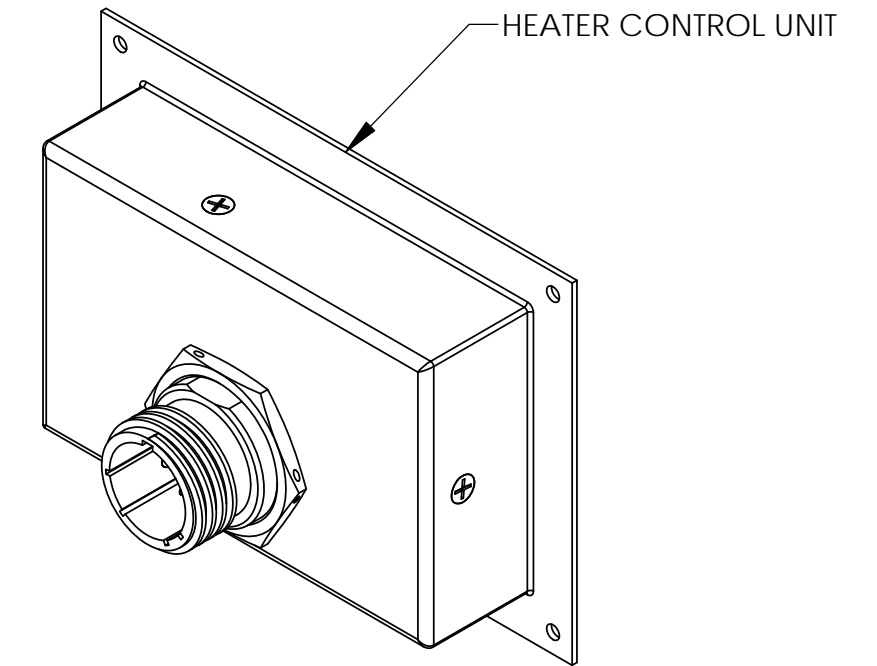


RECEPTACLE
D38999/24WD97PN

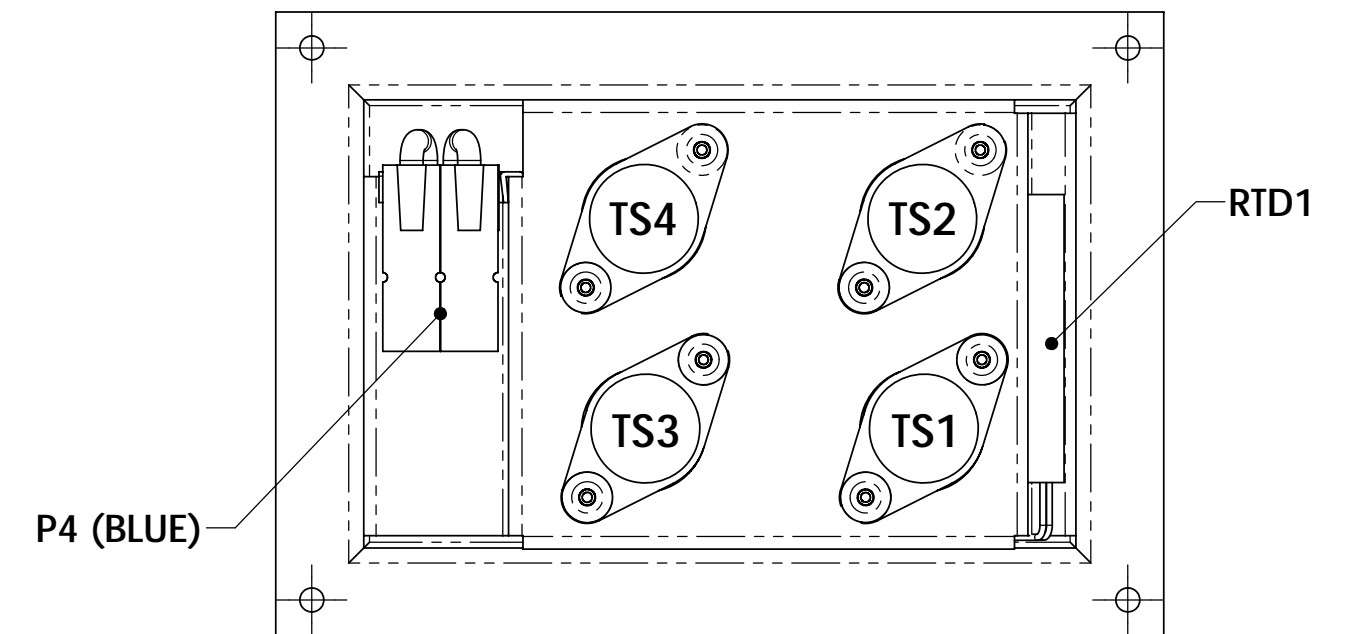
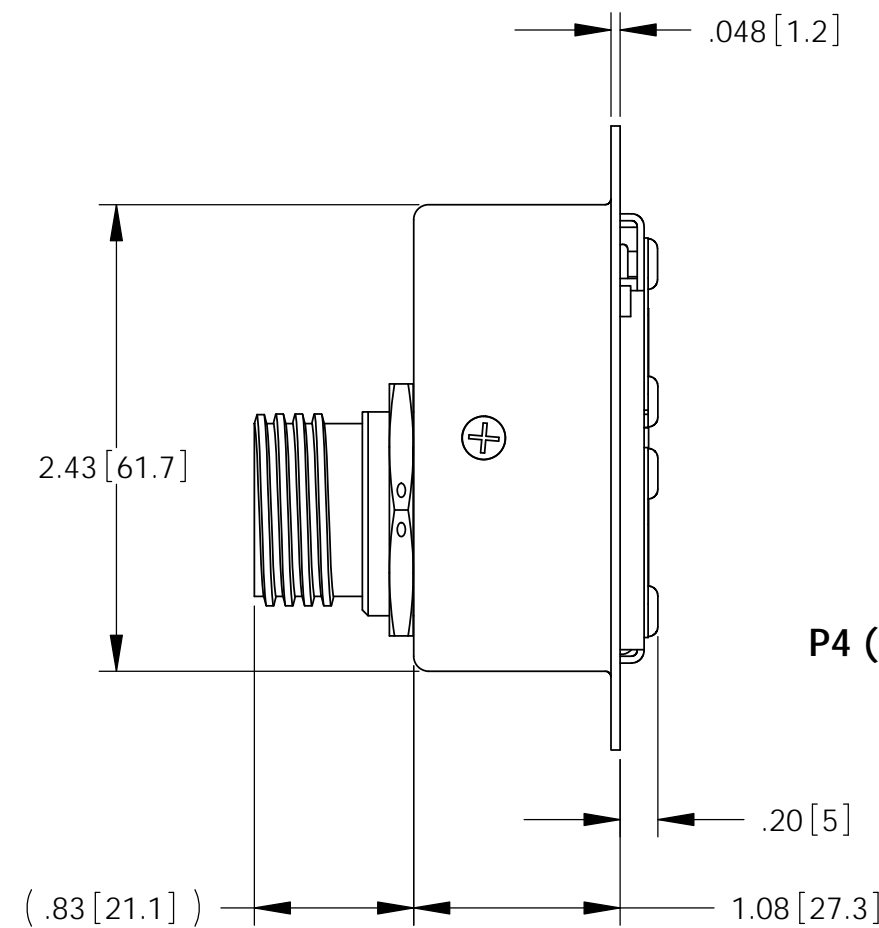
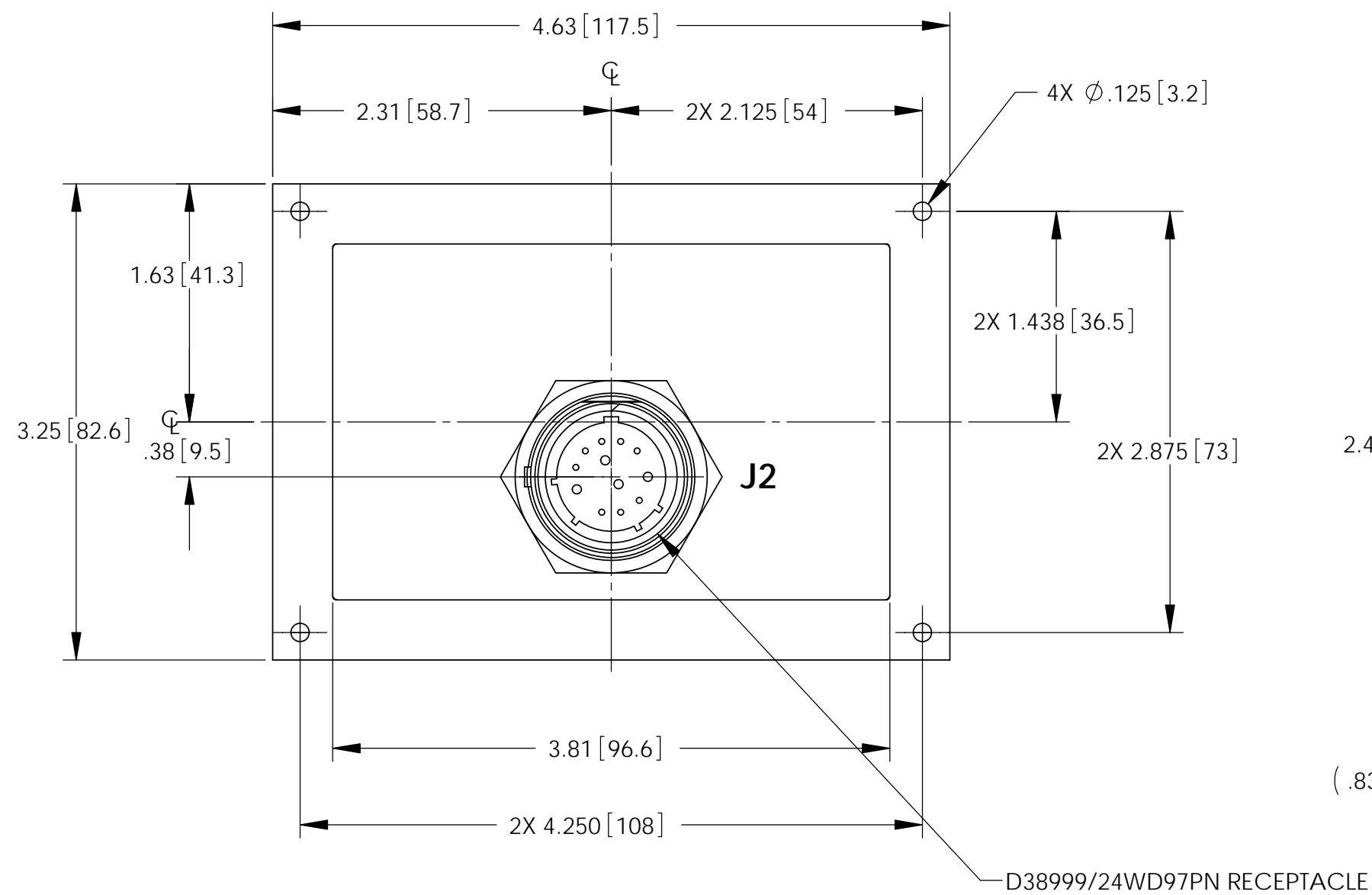


ELECTRICAL SCHEMATIC

REVISIONS			
REV	DESCRIPTION	DATE	APPROVED
A	REVISED SCHEMATIC, NOTES AND DETAIL VIEWS	3/26/11	JBT
B	ADDED EDGE PROTECTION AT WIRE EGRESS, AND NOTE 5, REVISED NOTE 3: CMM WAS ICA	7/19/12	JBT



PART NUMBER: HCU-7X



ENVELOPE DRAWING

UNLESS OTHERWISE SPECIFIED DIMENSIONS ARE IN INCHES TOLERANCES ARE:			CONTRACT NO.		CONCORDE BATTERY CORPORATION 2009 SAN BERNARDINO RD, W. COVINA, CA 91790		
FRACTIONS	DECIMALS	ANGLES	APPROVALS	DATE	TITLE		
±1/32	.XX ± .06 XXX ± .015	±1°	R.MURRIETTA	10/18/10	HEATER CONTROL UNIT, HCU-7X		
TREATMENT	NONE	CHECKED	AMIII	10/18/10	SIZE	CAGE CODE	DWG NO.
FINISH	NONE	APPROVED	JBT	10/21/10	C	63017	HCU-7X
SIMILAR TO	CALC WT	ISSUED	BT	7/19/12	SCALE	1:1	REV B
							SHEET 1 OF 1