

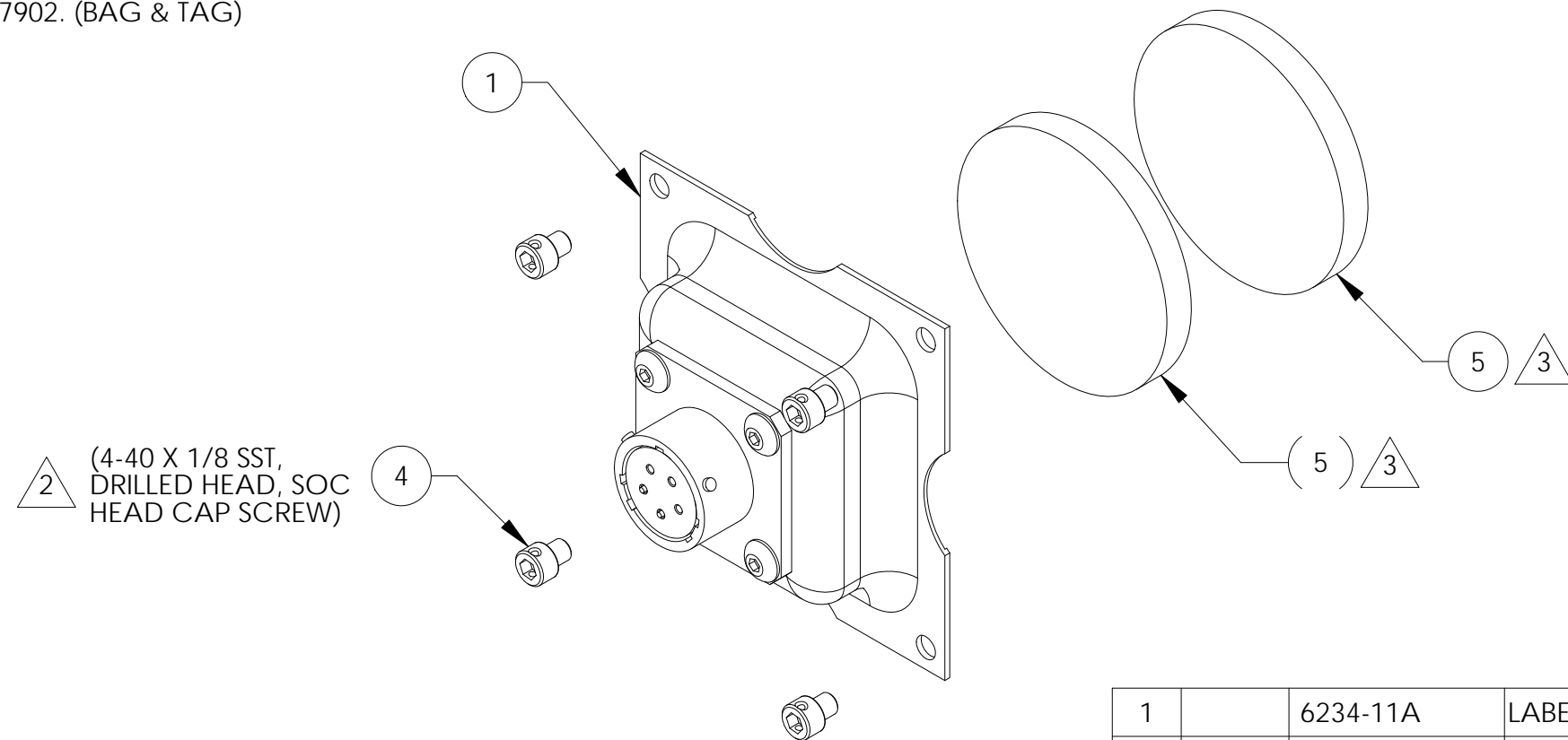
NOTES: UNLESS OTHERWISE SPECIFIED

1. KIT TO BE PACKAGED AND CLEARLY IDENTIFIED WITH PART NUMBER 5-0166 USING KIT PACKAGING LABEL, ITEM 6.

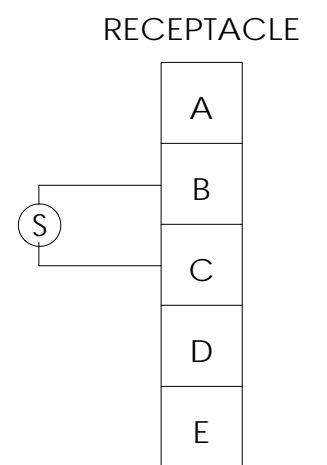
2 SCREWS, ITEM 4, TO BE CLEARLY IDENTIFIED WITH PART NUMBER 6424. (BAG & TAG)

3 GAP PAD, ITEM 5, TO BE CLEARLY IDENTIFIED WITH PART NUMBER 7902. (BAG & TAG)

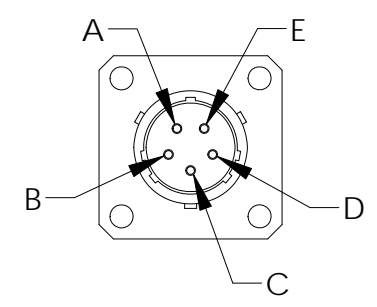
REVISIONS			
REV	DESCRIPTION	DATE	APPROVED
A	REVISED TO SHORT HOUSING, AND DESCRIPTION TO TS-C11A	1/13/09	DV
B	CORRECTED PN FOR ITEM 1 & 2, ADDED ITEMS 5, 6 & NOTES 2 & 3, REV NOTE 1	10/14/11	DV



2 (4-40 X 1/8 SST, DRILLED HEAD, SOC HEAD CAP SCREW)



SCHEMATIC DIAGRAM



TS-C11A RECEPTACLE:
MS27499E10B-5S OR EQUAL

QTY REQD	CAGE CODE	PART OR IDENTIFYING NO.	NOMENCLATURE OR DESCRIPTION	MATERIAL SPECIFICATION	ITEM NO.
1		6234-11A	LABEL, KIT PACKAGING		6
2		7902	GAP PAD, TEMPERATURE SENSOR, TS-C11A		5
4		6424	SCREW, CAP, SOCKET HEAD, DRILLED, SST		4
1		5-0165	ICA, TS-C11 SERIES TEMPERATURE SENSOR		3
1		5-0448	INSTALLATION INSTRUCTION, TS-C11A SENSOR		2
1		TS-C11A	TS-C11A TEMPERATURE SENSOR ASSEMBLY		1

PARTS LIST					
UNLESS OTHERWISE SPECIFIED DIMENSIONS ARE IN INCHES TOLERANCES ARE:		This document contains data which is PROPRIETARY to Concorde Battery Corp. Any use thereof is subject to the proprietary interest of Concorde. No data is to be disclosed to others without the written permission of Concorde Battery Corp.		CONCORDE BATTERY CORPORATION 2009 SAN BERNARDINO RD, W. COVINA, CA 91790	
FRACTIONS	DECIMALS	ANGLES	APPROVALS		
	.XX ± .XXX ±		DRAWN R.MURRIETTA	2/15/07	TITLE KIT, TEMPERATURE SENSOR, TS-C11A
TREATMENT	NONE		CHECKED AMIII	2/28/07	
FINISH	NONE		APPROVED JBT	3/1/07	SIZE B
SIMILAR TO	CALC WT	ISSUED BT	10/17/11	CAGE CODE 63017	DWG NO. 5-0166
				REV B	SCALE: NONE
				SHEET 1 OF 1	