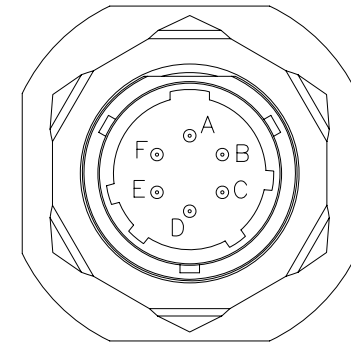
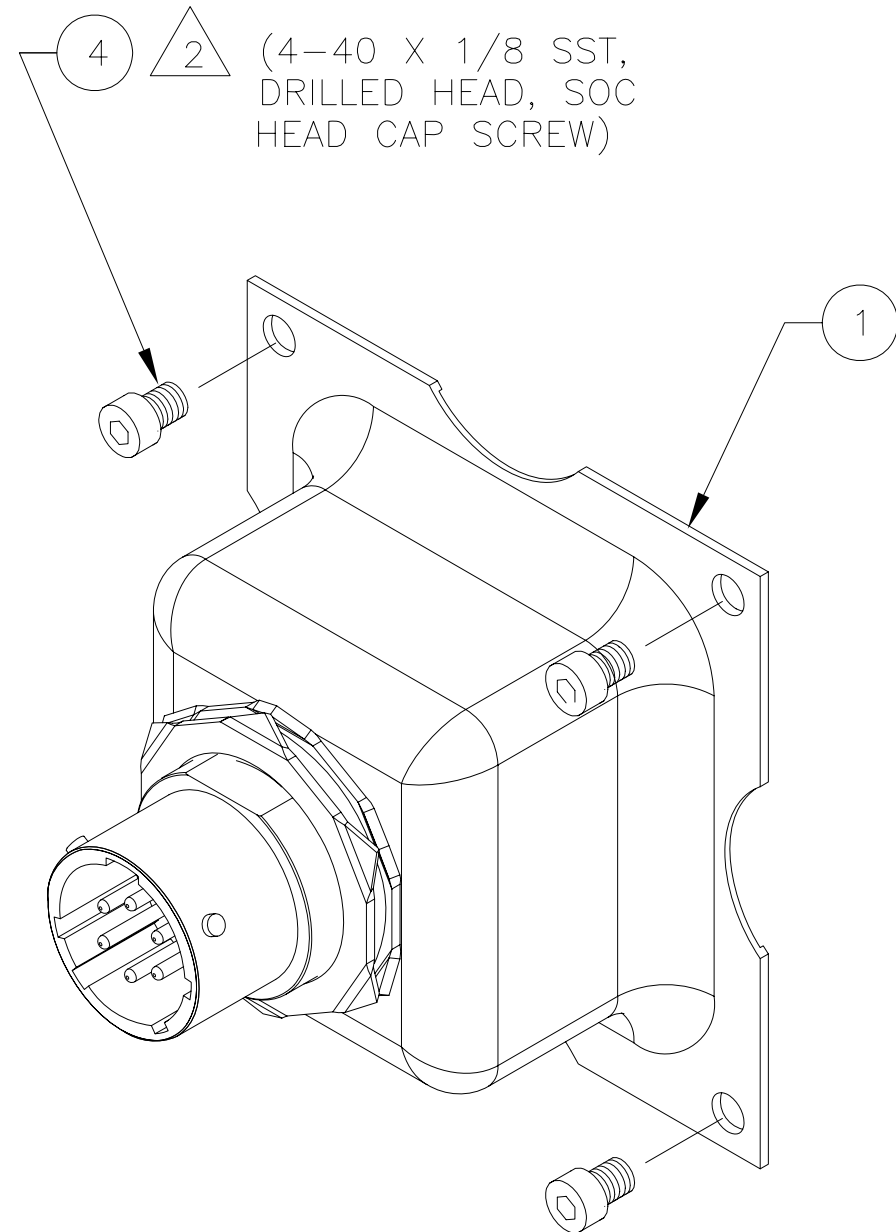


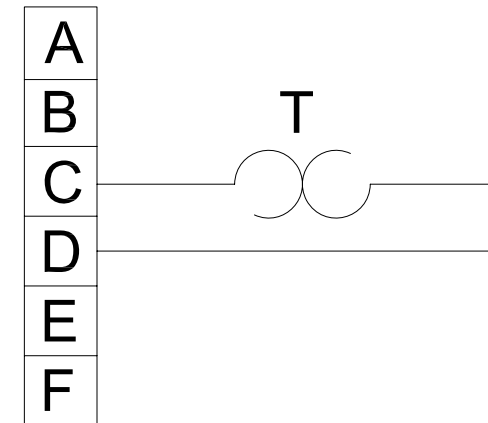
NOTES: UNLESS OTHERWISE SPECIFIED

1. KIT TO BE PACKAGED AND CLEARLY IDENTIFIED USING KIT PACKAGING LABEL, ITEM 5.

△ 2 SCREWS, ITEM 4, TO BE CLEARLY IDENTIFIED WITH PART NO. 6424 (BAG & TAG).



RECEPTACLE MS3114E10-6P OR MS3124E10-6P



SCHEMATIC

REVISIONS			
REV	DESCRIPTION	DATE	APPROVED
A	RECEPTACLE WAS MS3122E10-6P DELETED ITEM 3	2/28/02	JBT
B	UPDATED SCHEMATIC	3/10/02	JBT
C	REMOVED LABEL, ADDED 6424	9/30/04	JBT
D	ADDED ITEM 5 & NOTE 2, REV NOTE 1 & ITEM 1, UPDATED PL DESCRIPTIONS	11/08/11	JBT

QTY REQD	CAGE CODE	PART OR IDENTIFYING NO.	NOMENCLATURE OR DESCRIPTION	MATERIAL SPECIFICATION	ITEM NO.
1		6234-5	LABEL, KIT PACKAGING		5
4		6424	SCREW, CAP, SOCKET HEAD, DRILLED, SST		4
1		5-0134	ICA, TS-C5 SERIES		3
1		5-0117	INSTALLATION INSTRUCTION, L SERIES SENSORS		2
1		TS-C5	TS-C5 TEMPERTURE SENSOR ASSEMBLY		1

PARTS LIST

UNLESS OTHERWISE SPECIFIED DIMENSIONS ARE IN INCHES TOLERANCES ARE:			This document contains data which is PROPRIETARY to Concorde Battery Corp. Any use thereof is subject to the proprietary interest of Concorde. No data is to be disclosed to others without the written permission of Concorde Battery Corp.			CONCORDE BATTERY CORPORATION 2099 SAN BERNARDINO RD, W. COVINA, CA 91790			
FRACTIONS	DECIMALS	ANGLES	APPROVALS		DATE	TITLE KIT, TEMPERATURE SENSOR, TS-C5			
±	.XX ±	±	DRAWN	S. VALDEZ	12/6/01	SIZE	CAGE CODE	DWG NO.	REV
	.XXX ±		CHECKED	HRF	12/7/01	B	63017	5-0118	D
TREATMENT	NONE		APPROVED	JBT	12/10/01	SCALE		SHEET 1 OF 1	
FINISH	NONE		ISSUED	BT	11/09/11	NONE			
SIMILAR TO NA	ACT WT NA	CALC WT NA							